

Metadata en geoservices

Presentatie studiedag GeoMetaMatica

Drs. Bert Vermeij, ESRI Nederland
b.vermeij@esrinl.com



ESRI Nederland

JE WEET MEER DAN JE DENKT

Waar gaan we het over hebben

- Trends in GIS
 - Van data naar kennis
 - Naar gedistribueerde kennis
- Metainformatie voor geografische kennis
- Levenscyclus kennis
- Geoservices: kennis bij de bron
- Werkende oplossing in standaard software
 - Demo



Trends



ESRI Nederland

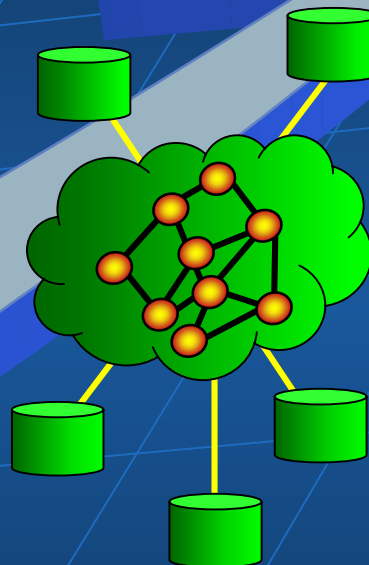
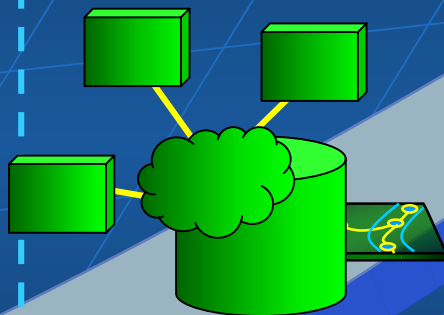
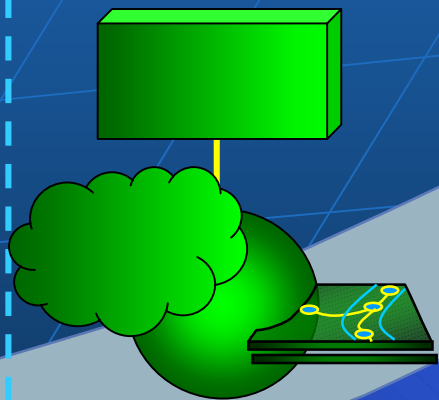
JE WEET MEER DAN JE DENKT

Gedistribueerd GIS

Gedistribueerde Netwerken

Client /Server Systemen

Tools & Data



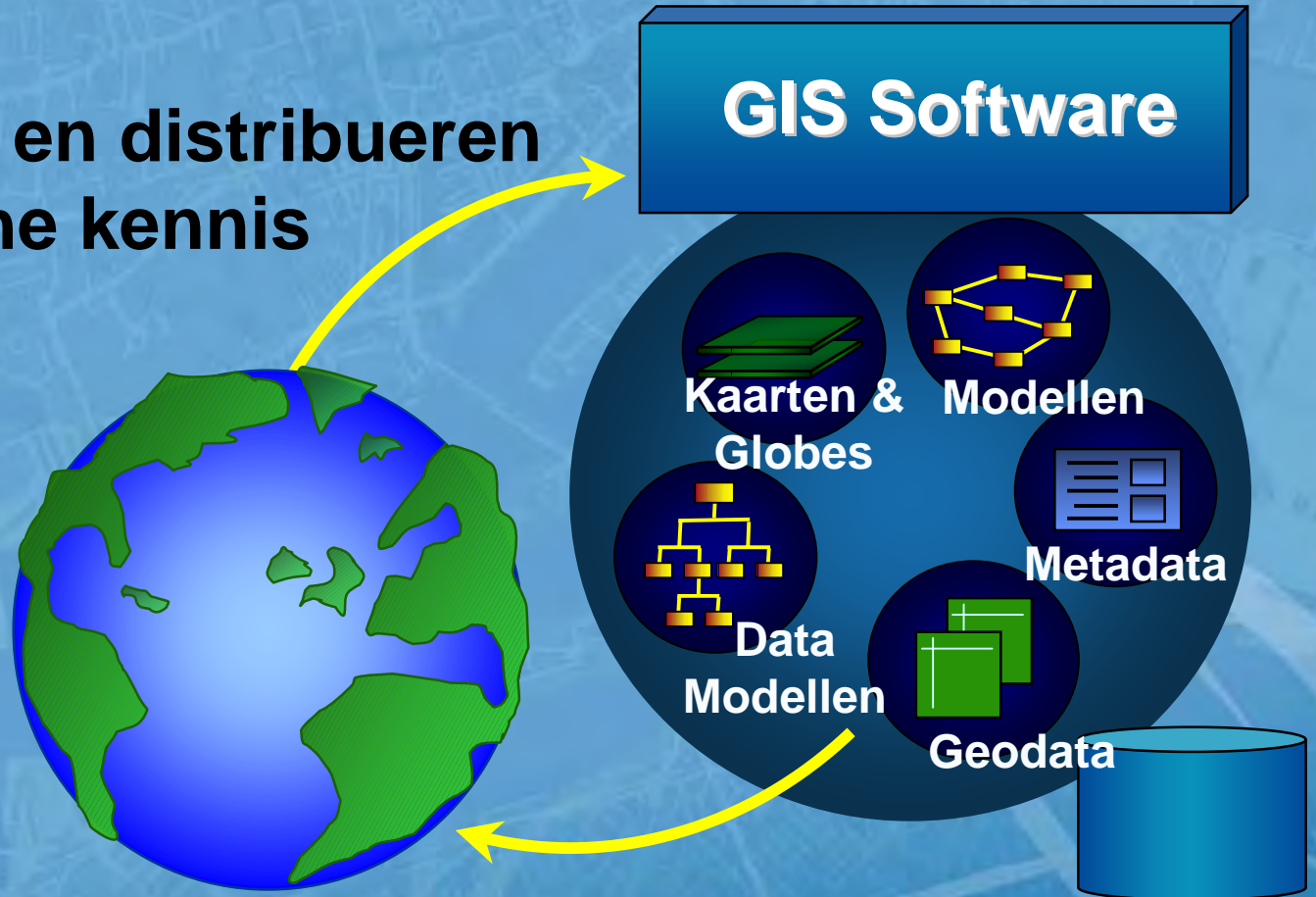
Gedeelde GeoServices

Informatie Management

Professionele Productiviteit

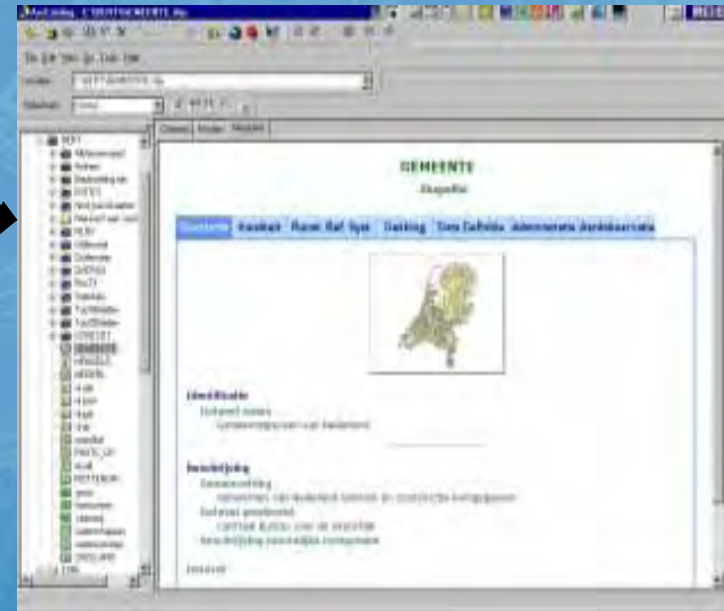
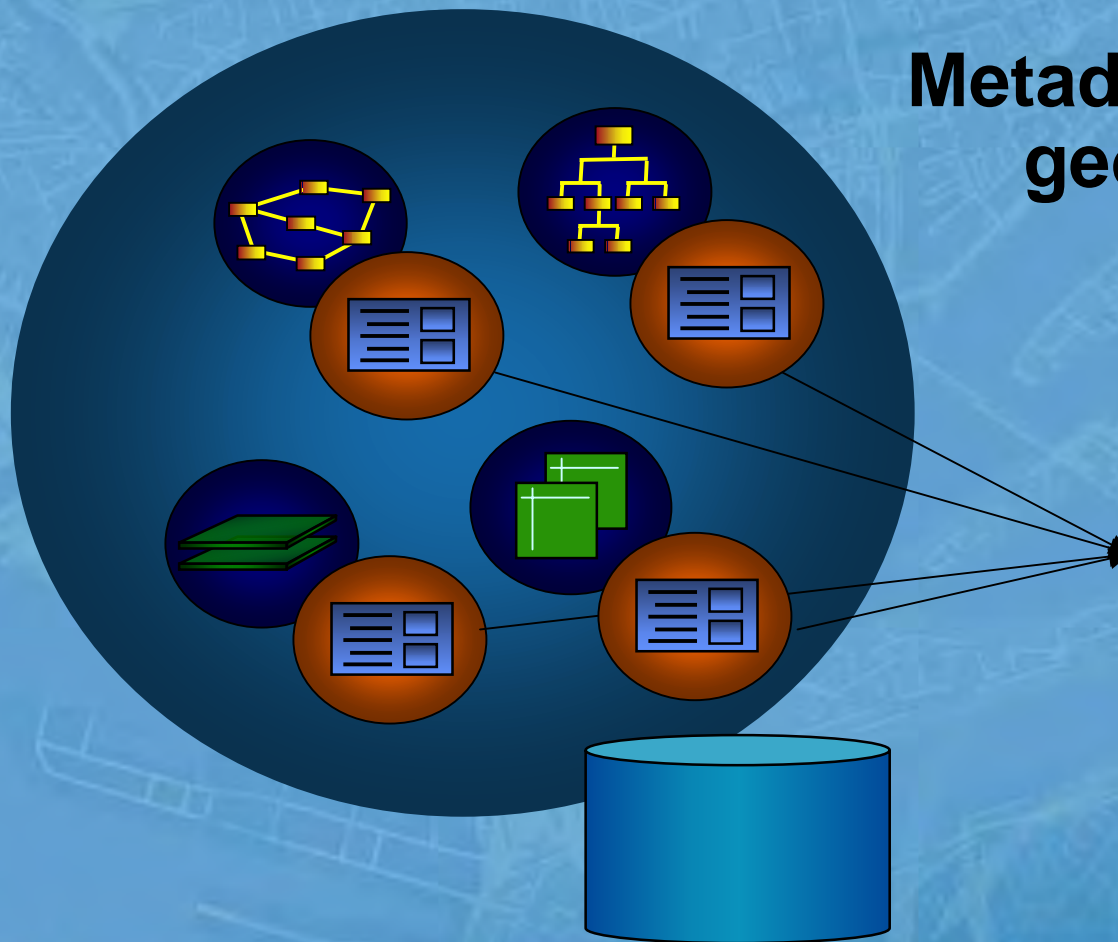
GIS wordt intelligenter

Vastleggen en distribueren
geografische kennis



Metadata onmisbaar

Metadata documenteert
geografische kennis



Metainformatie voor geografische kennis



ESRI Nederland

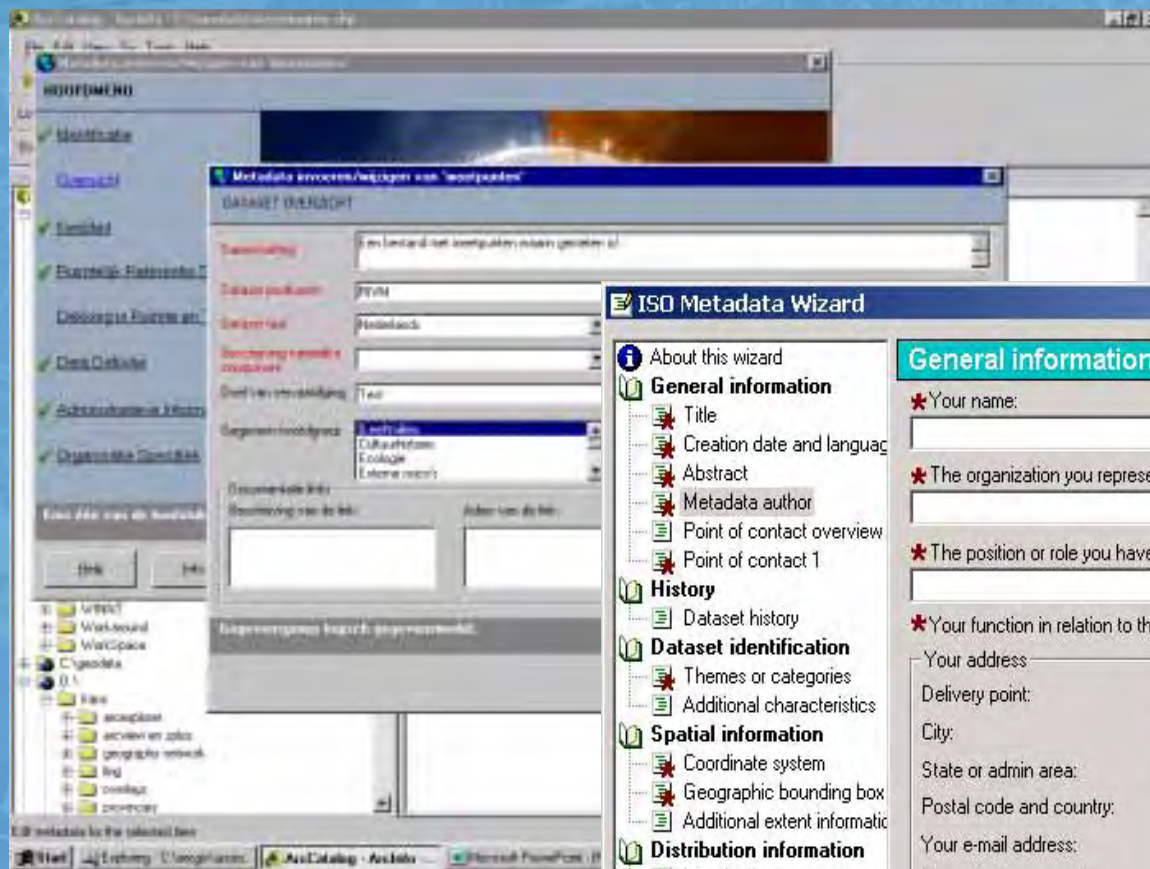
JE WEET MEER DAN JE DENKT

Integratie metadata in GIS

- Metadata voor alle kenniscomponenten
 - Geografische data
 - Shapefile, coverage, geodatabase, ArcSDE, OracleSpatial
 - Raster, GRID, TIN, Images, DXF, DWG, DGN
 - Tabellen, databases
 - Kaarten, globes
 - Modellen
 - Datamodellen
- Metadata reist mee
 - copy, move, rename, delete
 - project, clip
- Automatisch genereren en synchroniseren



Beheren metadata - ArcCatalog



ISO Metadata Wizard

General information: Metadata author

*Your name: Save...

*The organization you represent: Load...

*The position or role you have in the organization: Make Default

*Your function in relation to the metadata: Edit Contacts

Your address:

Delivery point:

City:

State or admin area:

Postal code and country:

Your e-mail address:

Your telephone number:

Your facsimile number:

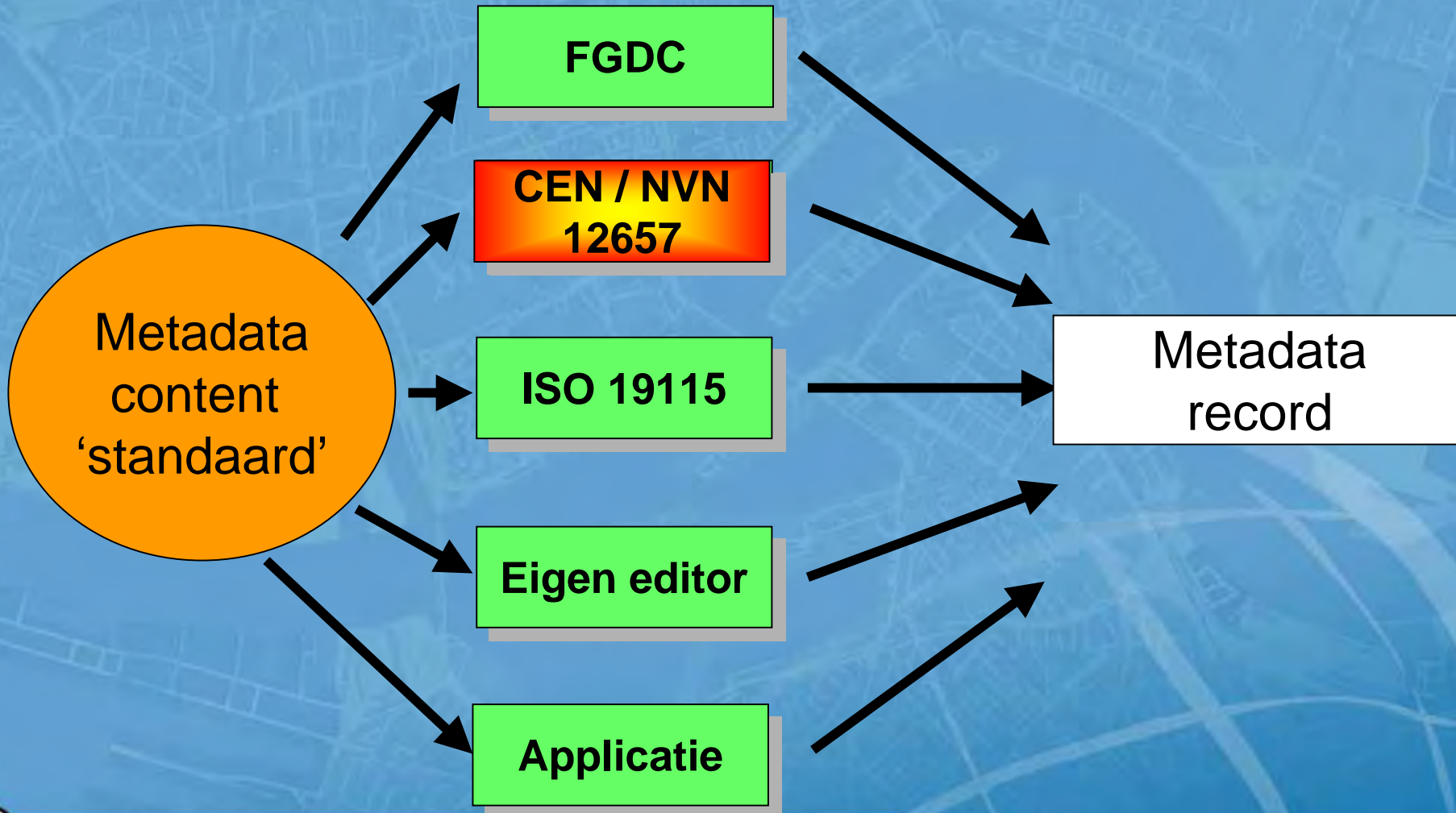
Enter the information and then press Make Default so you won't have to enter it again next time.

Hide Contents >> < Back Next > Finish Cancel



Metadata standaarden in ArcCatalog

Editor bepaalt metadata schema



Twée soorten metadata

Properties

- Door het systeem automatisch gegenereerd
- Gemakkelijk, efficiënt en foutloos

Map extent

Coordinate system

Raster size

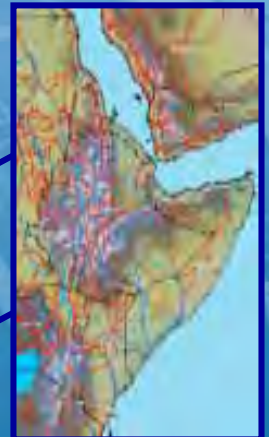


Documentatie

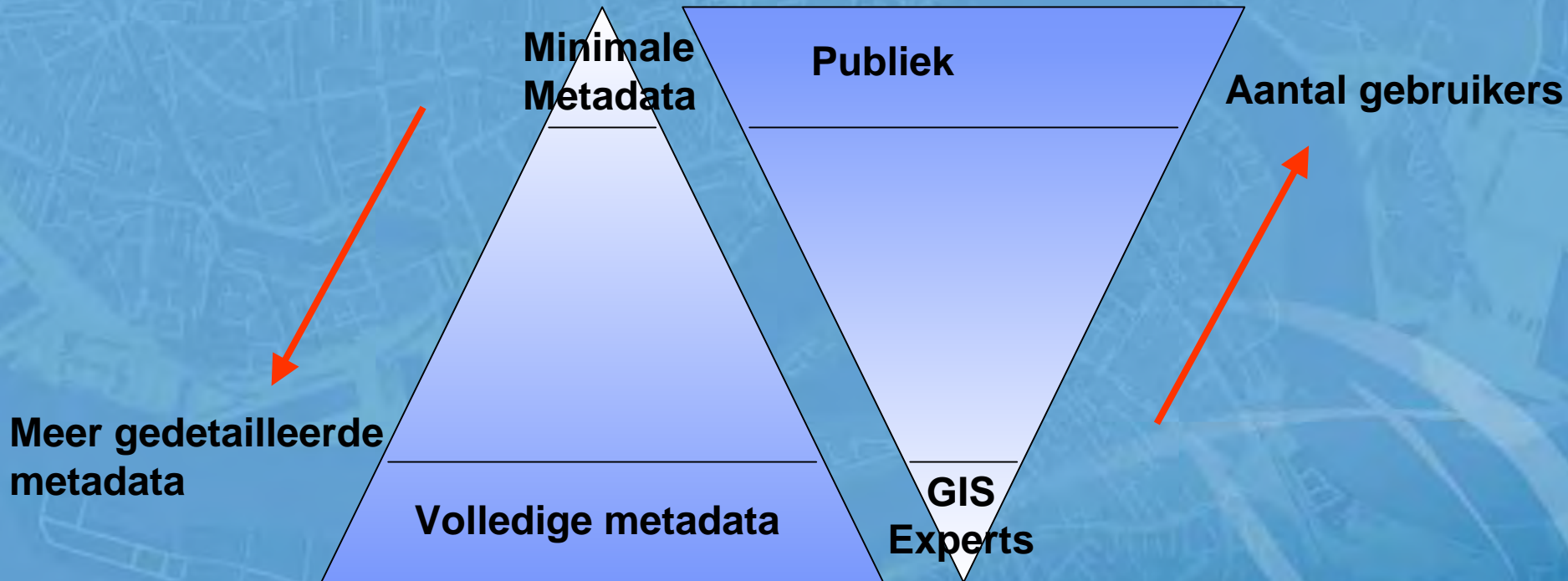
- Door de gebruiker invullen
- Semantiek

Dataset titel

Definities

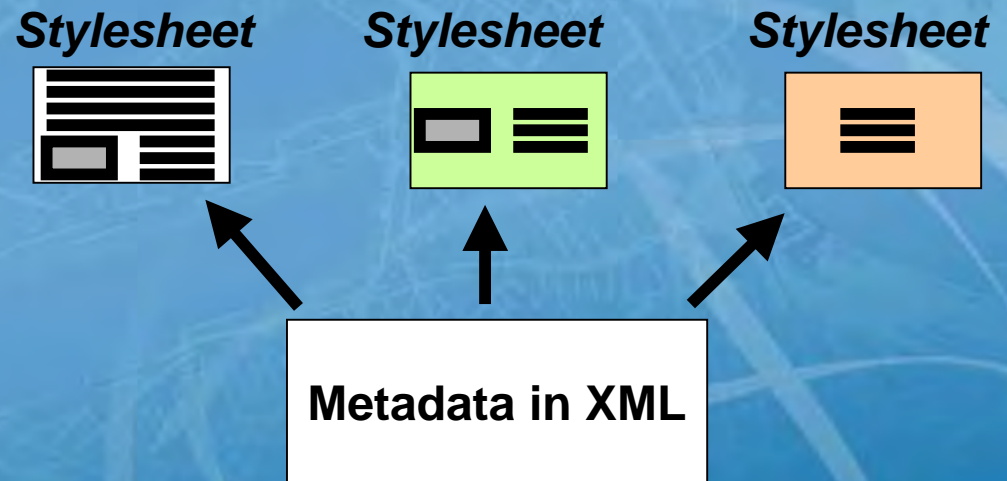


Metadata: verschillende behoeften

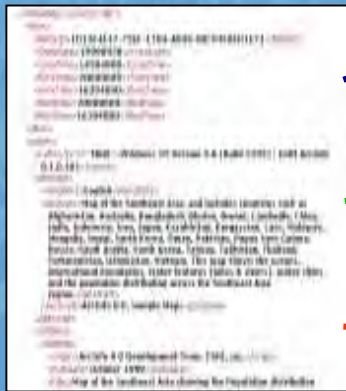


Weergeven metadata

- Stylesheets
 - Stylesheet selecteert gewenste metadata
 - Stylesheet definieert weergave
- Zelfde metadata, verschillende presentaties
 - Doelgroepen
 - Toepassingen



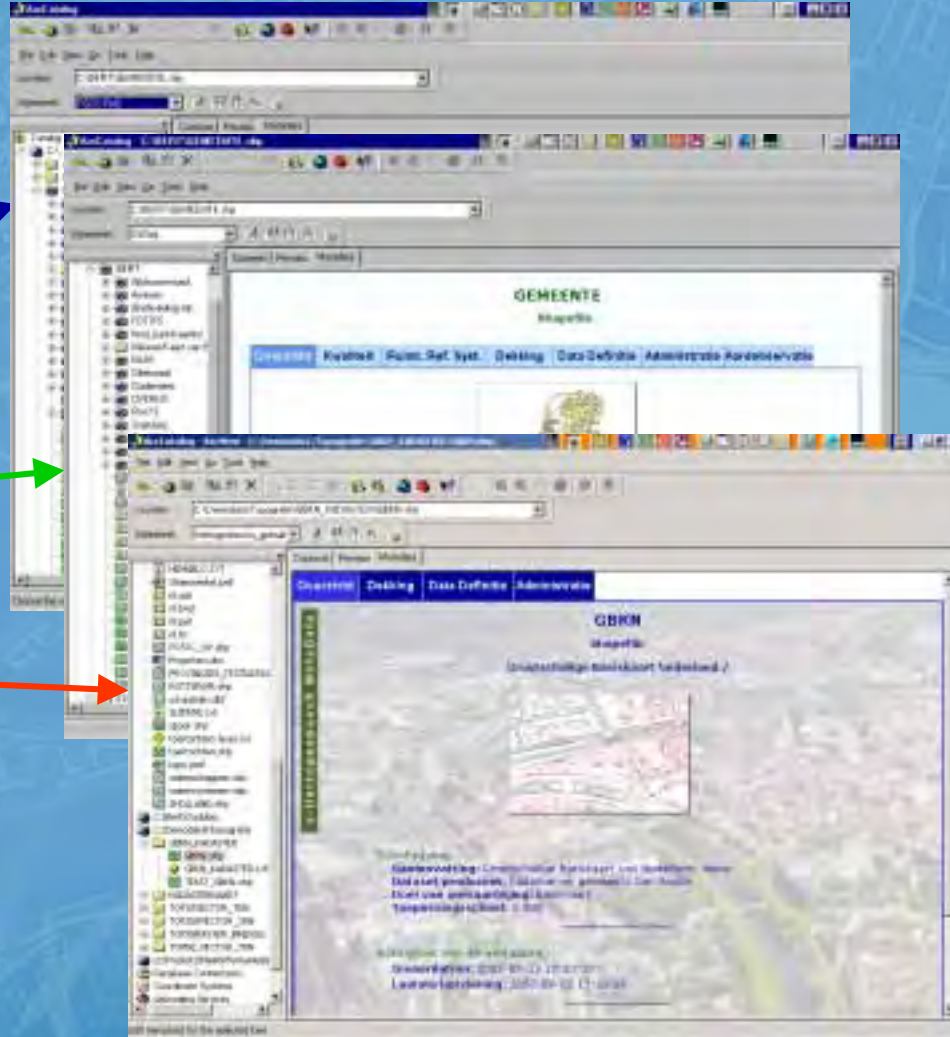
Gebruik stylesheets



stylesheet 1

stylesheet 2

stylesheet 3



Metadata
in XML



ESRI Nederland

JE WEET MEER DAN JE DENKT

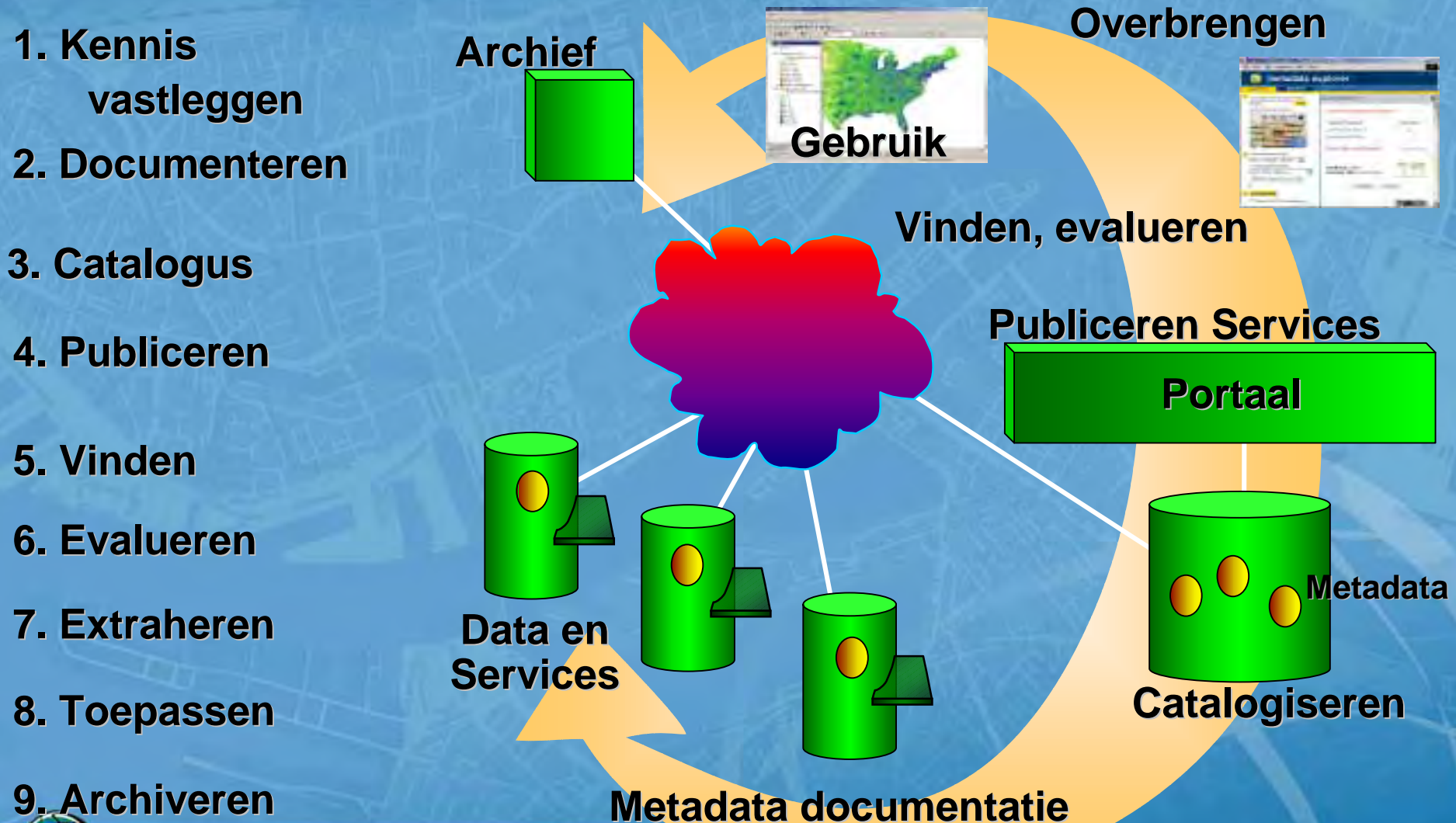
Levenscyclus kennis



ESRI Nederland

JE WEET MEER DAN JE DENKT

Levenscyclus kennis



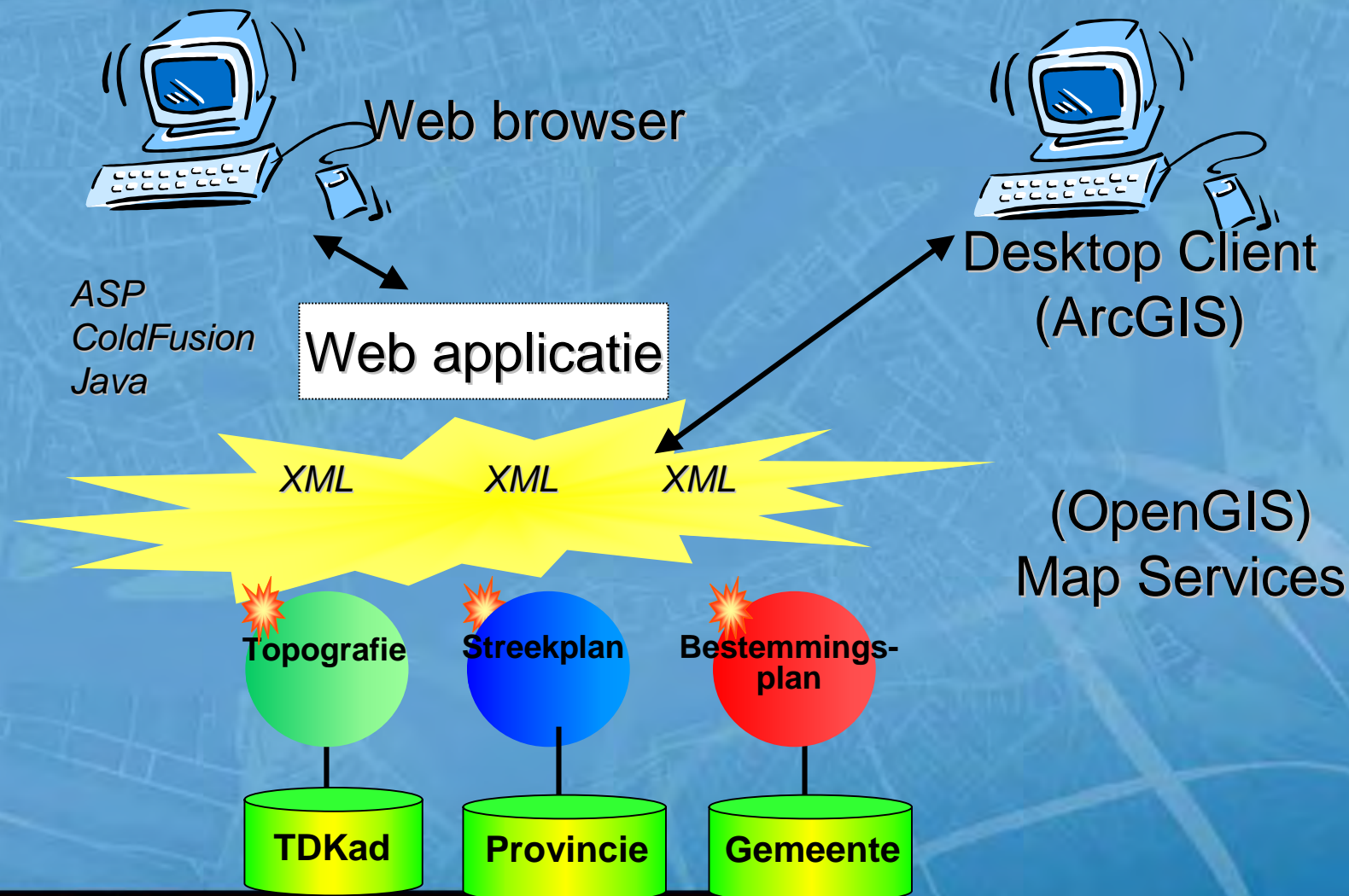
Webservices: kennis bij de bron



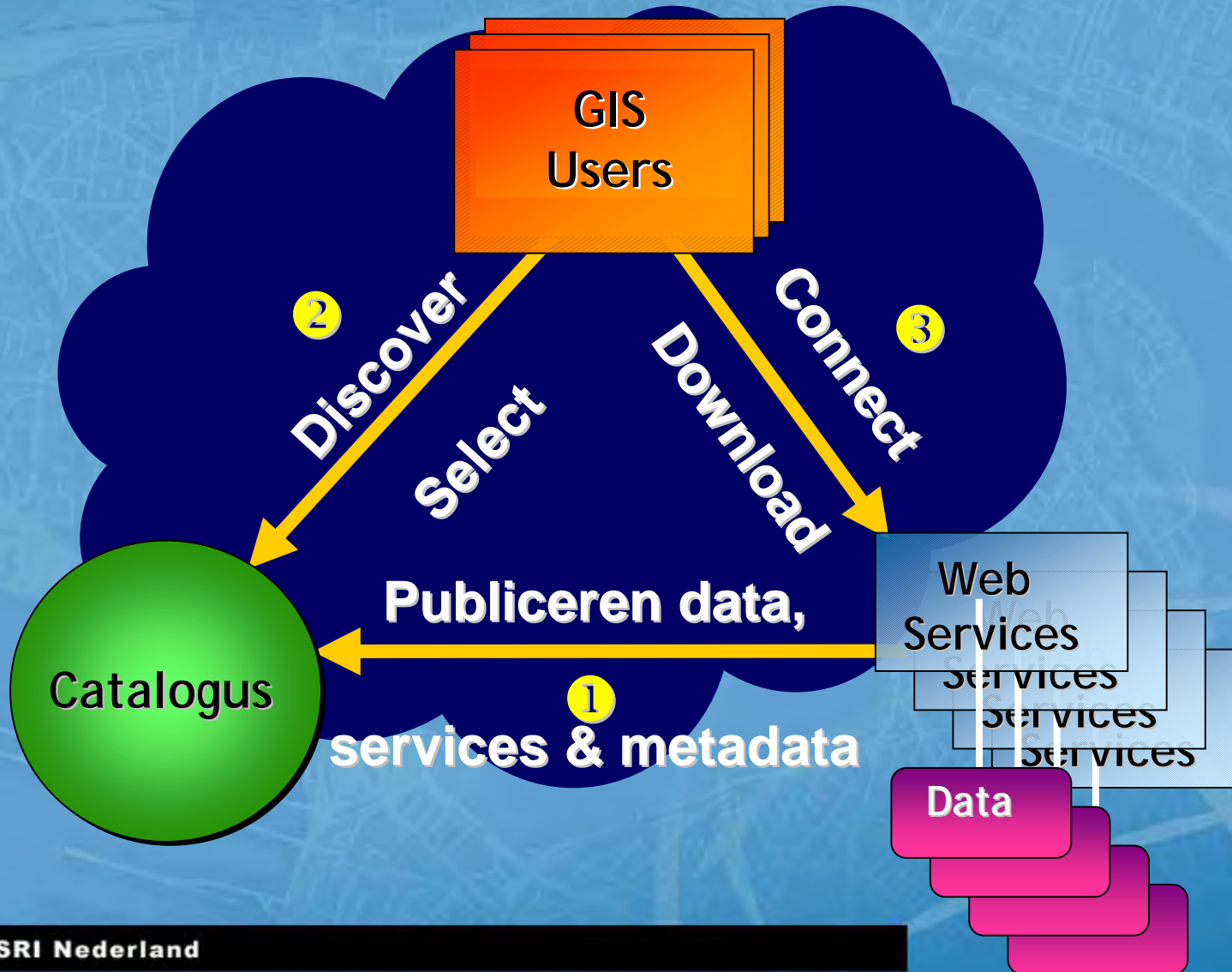
ESRI Nederland

JE WEET MEER DAN JE DENKT

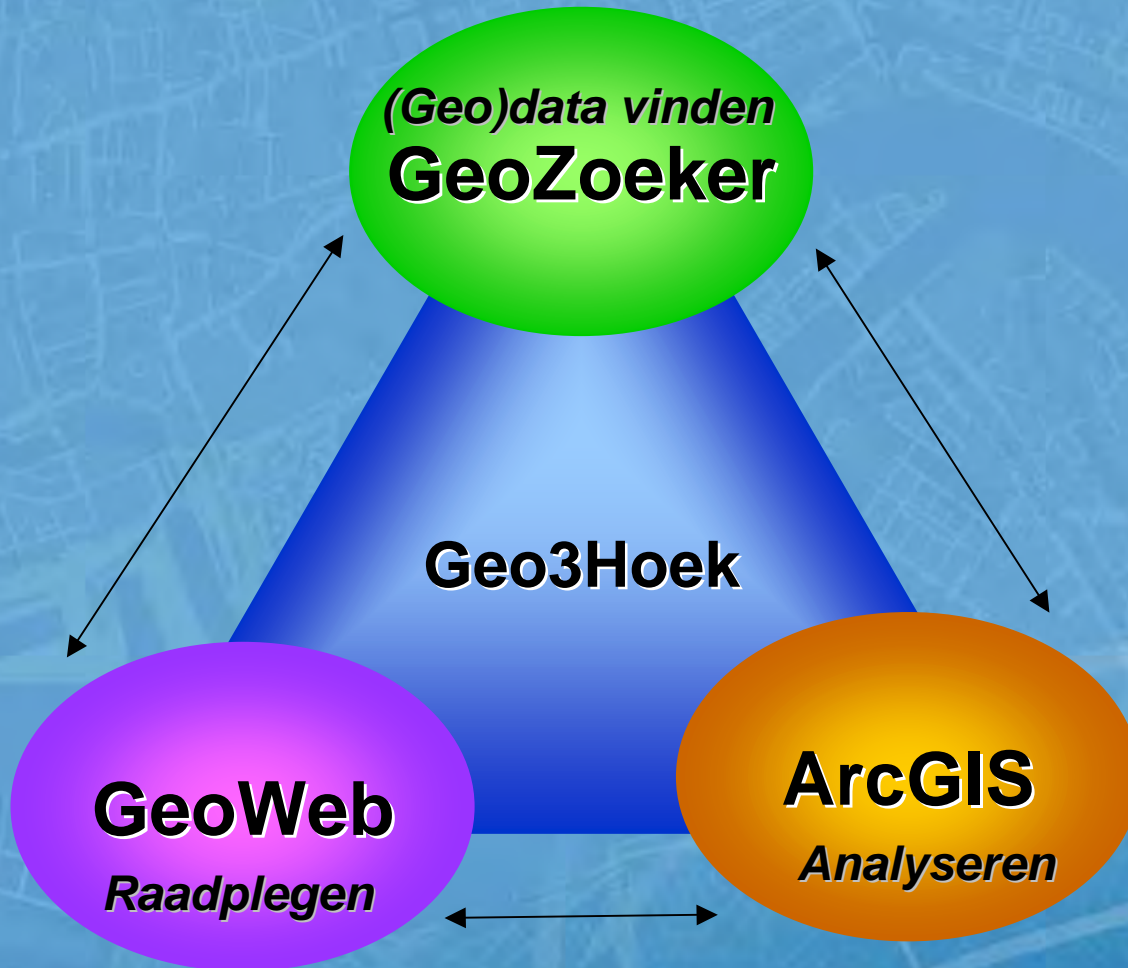
WebServices



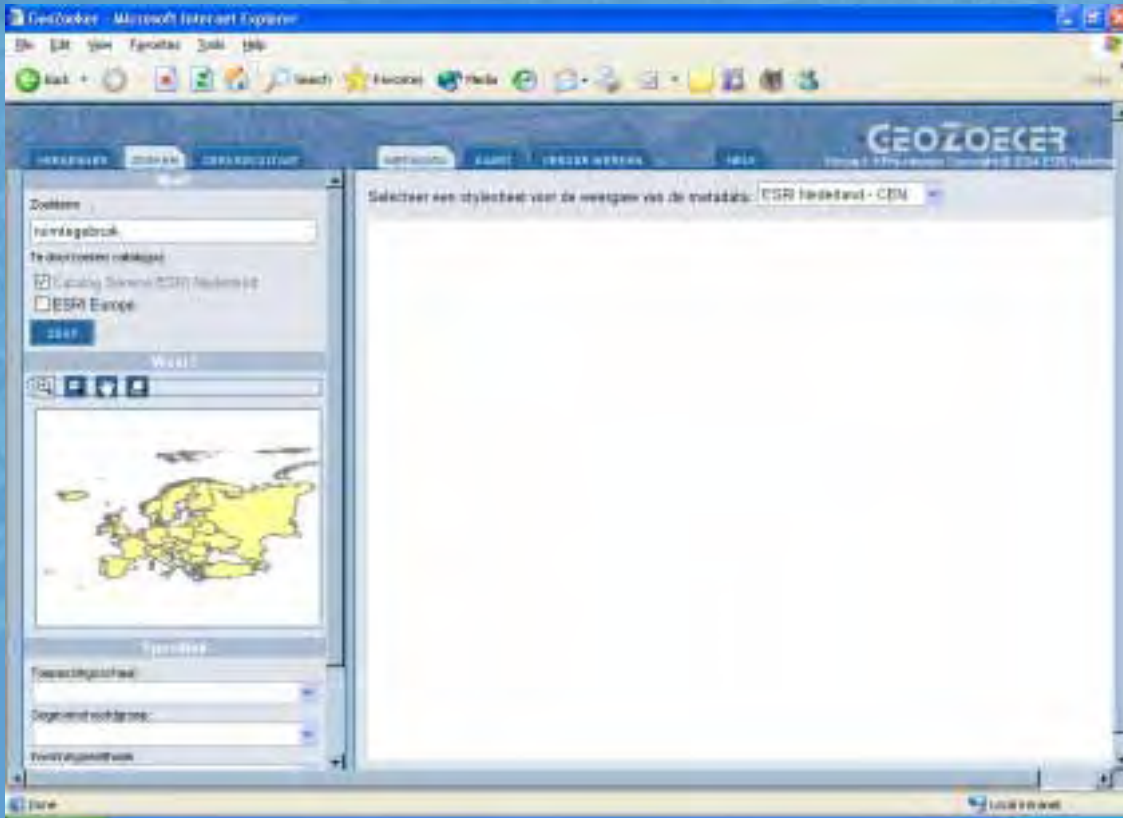
Gedistribueerd GIS



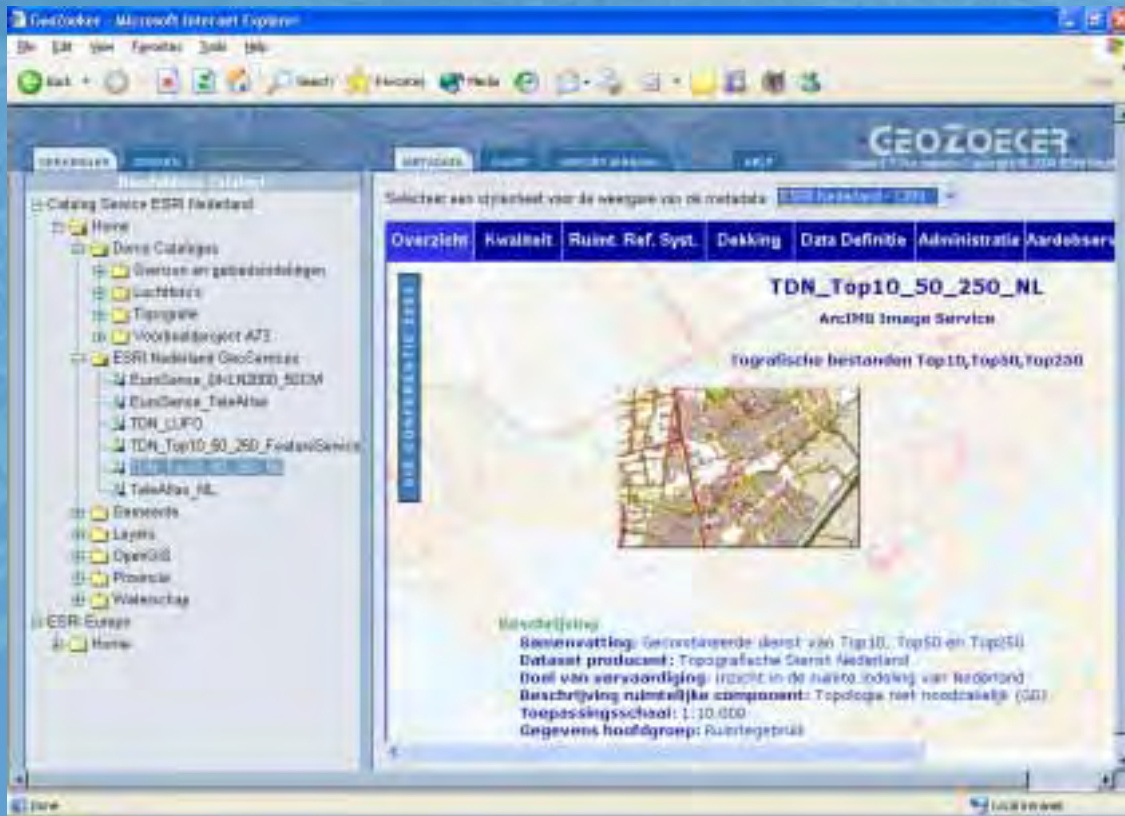
Geo3Hoek



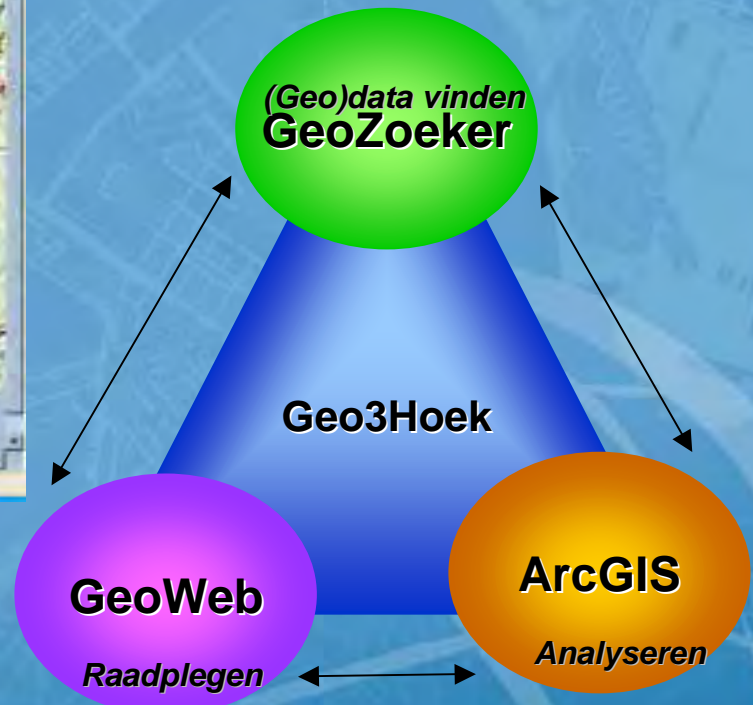
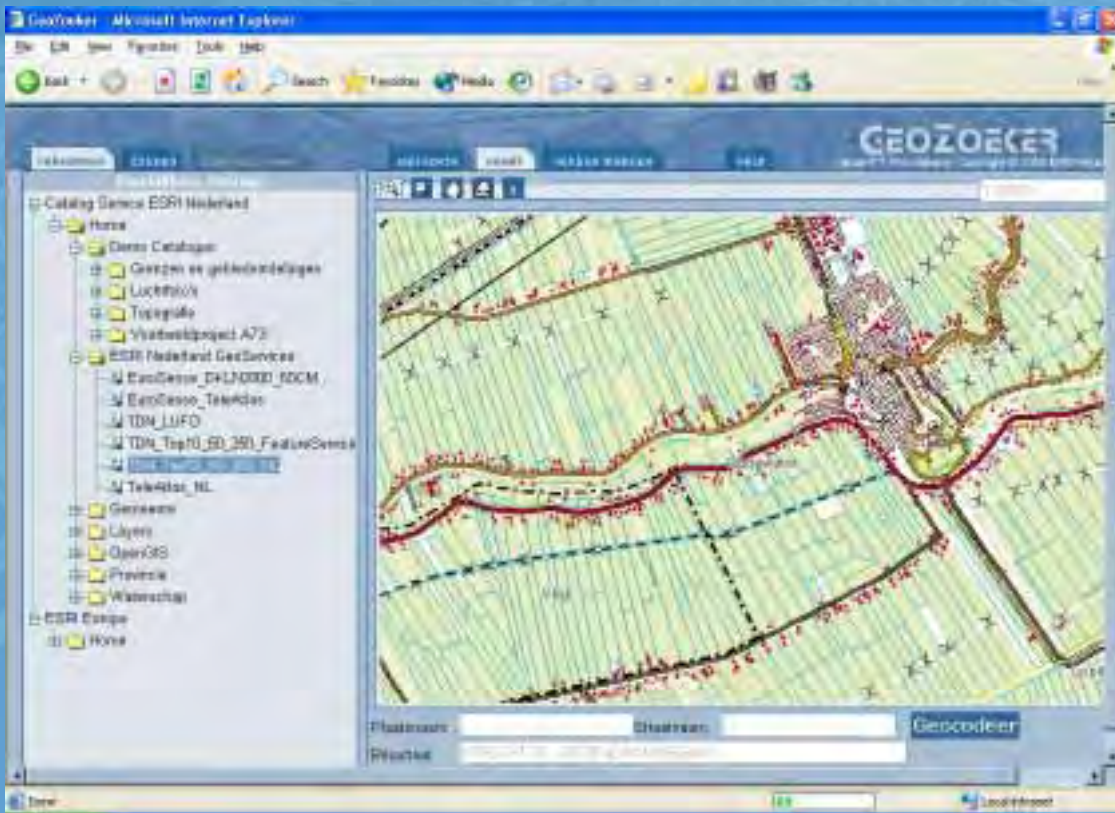
Zoeken in catalogus



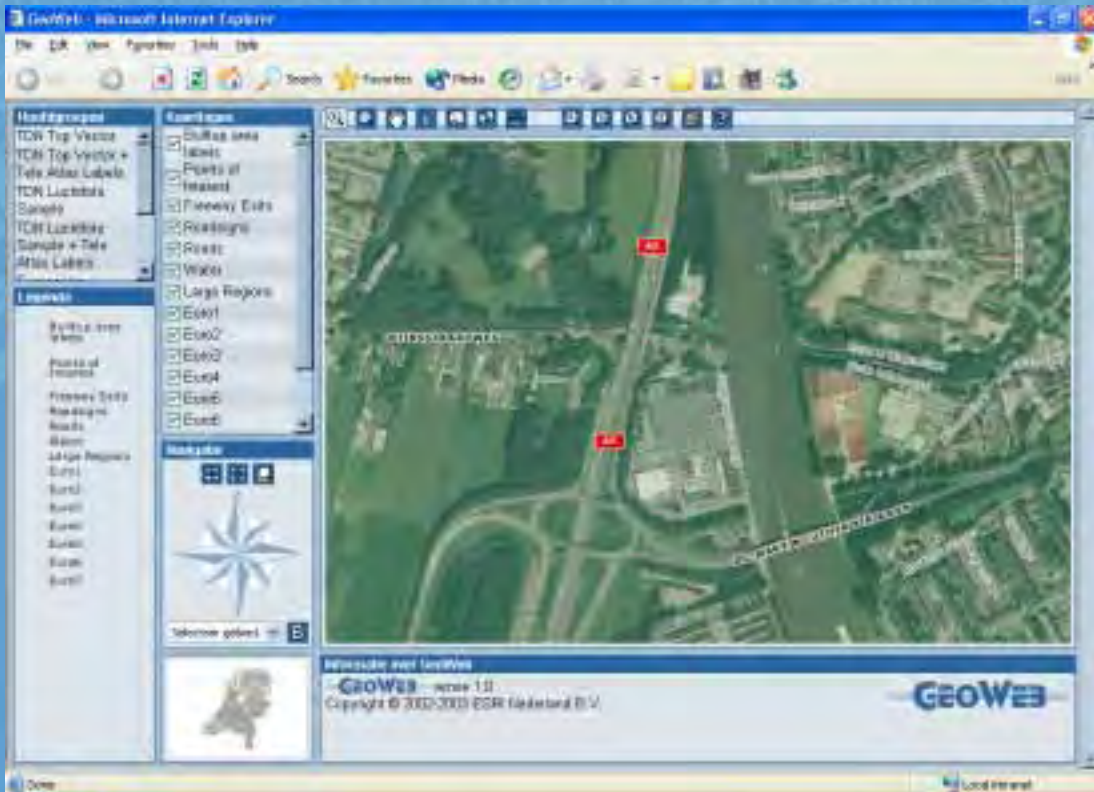
Exploreren: metadata



Exploreren: kaart



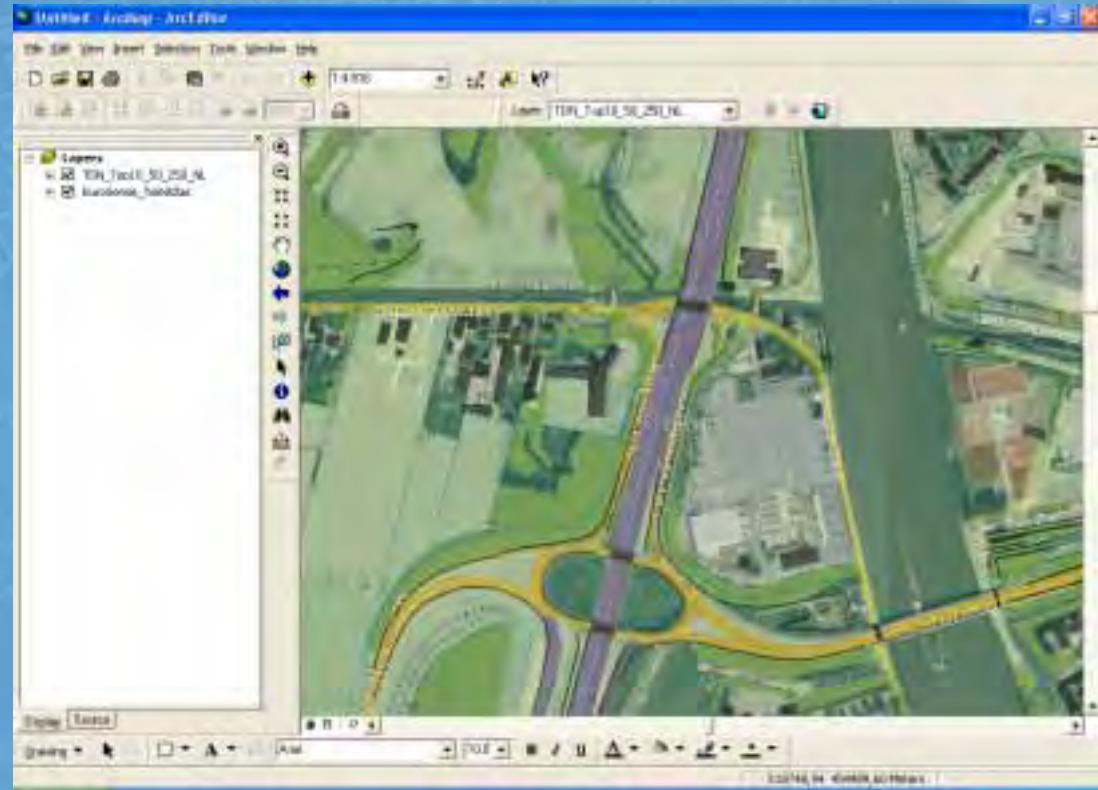
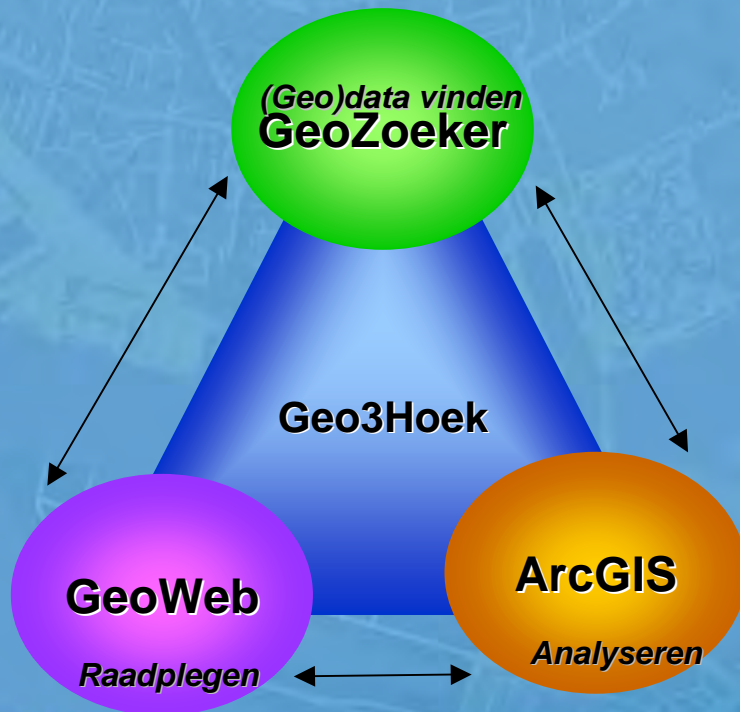
Raadplegen



ESRI Nederland

JE WEET MEER DAN JE DENKT

Gebruik in professioneel GIS



GeoSpatial One Stop

geodata.gov - Microsoft Internet Explorer

Home | Search | About This Site | GeoData Market Place | Information Center | Map Viewer

Search

Where? [Help](#)

 Anywhere **Or** **FIND** a place

Or locate your area here   



Data must fall completely inside area

LAUNCH MAP VIEWER TO DRAW BOX >

GET BOX ALREADY DRAWN ON VIEWER

What? [Help](#)

Keywords:

Match:

- Exact phrase
- Any word
- All words

Data Category:

Certification Level:

Provided by:

Scale/Coverage:

Type/Format:

When? [Help](#)

- Any time period
- Data for time period (yyyymmdd)
From:
To:
- Data updated recently (yyyymmdd)
After:

LOAD A SAVED SEARCH... **SAVE SEARCH...** **SEARCH >**



INSPIRE

INSPIRE
European Geo-Portal

Home | Search | Map Viewer | Data Categories | Contact Us

Public Information

- Discover or publish your INSPIRE services
- Home

Map Center

- Check your trace

Search

- Search for data
- Knowledge services
- Home of People
- Visiting Guide

Geo-portal of a state

- What is the Geo-portal
- Standard Tools
- Map
- Geo-Portal partners

INSPIRE initiative

- INSPIRE background
- INSPIRE collected
- INSPIRE home

SDI Toolkits

- Standards
- Services
- SDI Initiatives
- INSPIRE in Europe

INSPIRE (Infrastructure for Spatial Information) launched by the European Commission and its Member States and accession countries. It is relevant, harmonised and quality geographic information, implementation, monitoring and policies with a territorial dimension or impact, creation of a European spatial data infrastructure, integrated spatial information services linked protocols.

The INSPIRE Geo-Portal is Europe's Internet and Services. From here, you can search for a organization.

Create your map

Available

Please note that this is an experimental Geo-Portal, aiming at better understanding user needs and the standards-based technical specifications.

INSPIRE
European Geo-Portal

Home | Search | Map Viewer | Data Categories | Contact Us

Where? Anywhere **FIND A PLACE...**

Or locate your area here

Data must fall completely inside area

LAUNCH MAP VIEWER TO DRAW BOX

SET BOX ALREADY DRAWN IN VIEWER

Keywords:

Match:

- Exact phrase
- Any word
- All words

Data Category:

Provider Level:

Scale/Coverage:

Type/Format:

When?

- Anytime
- Data for time period (yyyy-mm-dd)
- Data updated recently (yyyy-mm-dd)

Sort results by: **SEARCH** **RESET**

Home | Search | Map Viewer | Data Categories | Contact Us

EUROPEAN COMMISSION

IMPORTANT LEGAL NOTICE | The information on this web site is subject to a



ESRI Nederland

JE WEET MEER DAN JE DENKT

Samengevat

- Gedistribueerd GIS = Gedistribueerde kennis
- Webservices: kennis bij de bron
- Metadata onlosmakelijk onderdeel

