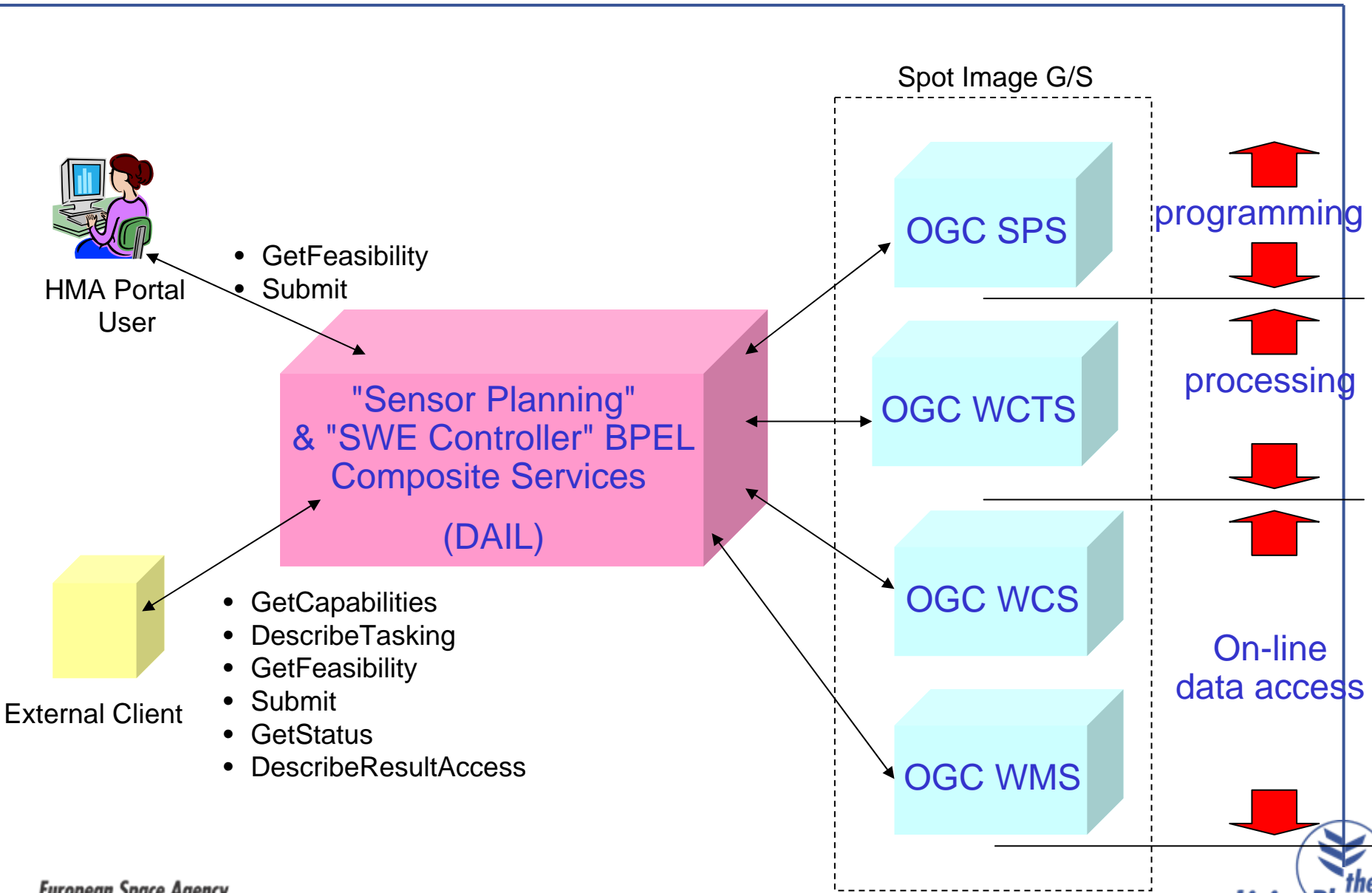


Sensor Planning and SWE Controller

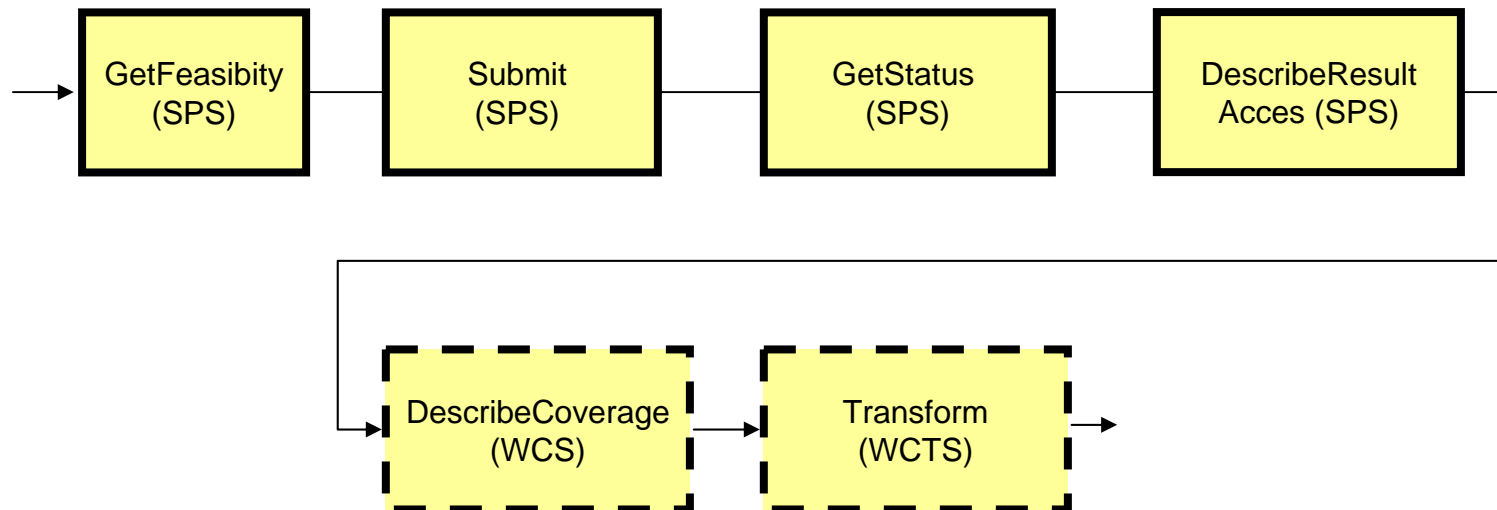
Utrecht, 01 Feb 2007

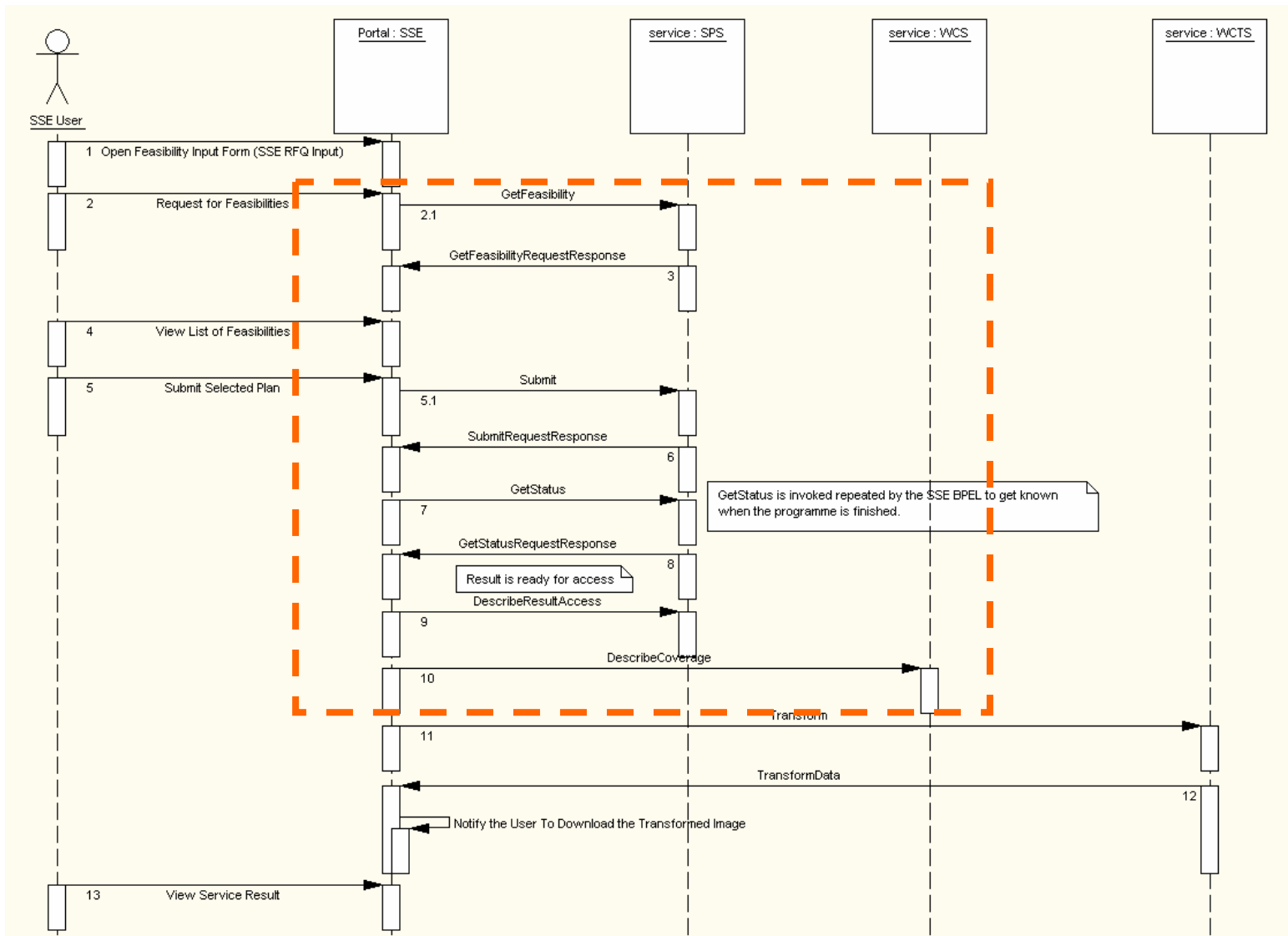
Yves Coene, The Hoa Nguyen, Rowena Smillie - SPACEBEL
Philippe Merigot, Didier Giacobbo - Spot Image

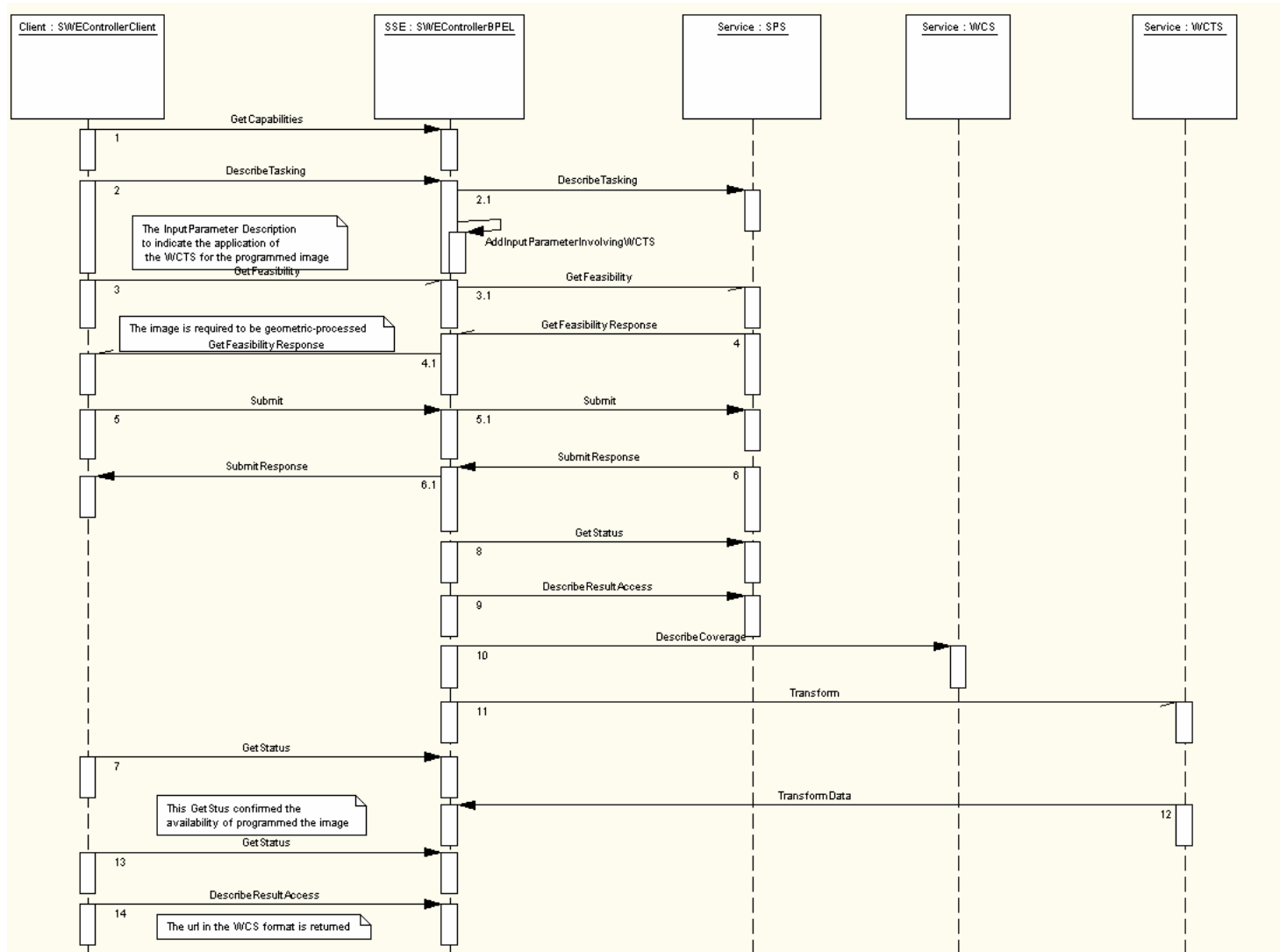
- The OWS-4 Testbed SPS prototype is a joint effort by Spot Image and Spacebel.
- An SPS (Sensor Planning Service) prototype service for EO which returns raw images (level 1A).
- BPEL workflow implementing the service chain (SPS → WCS (or SOS) → WCTS), called "SWE Controller".
- The "SWE Controller" allows the end users to make a planning for an image and have it rectified by the Spot Image WCTS after the planning finishes.
- The SWE controller is accessible via the HMA Portal and via a SOAP/WSDL interface.



➤ Programming operations

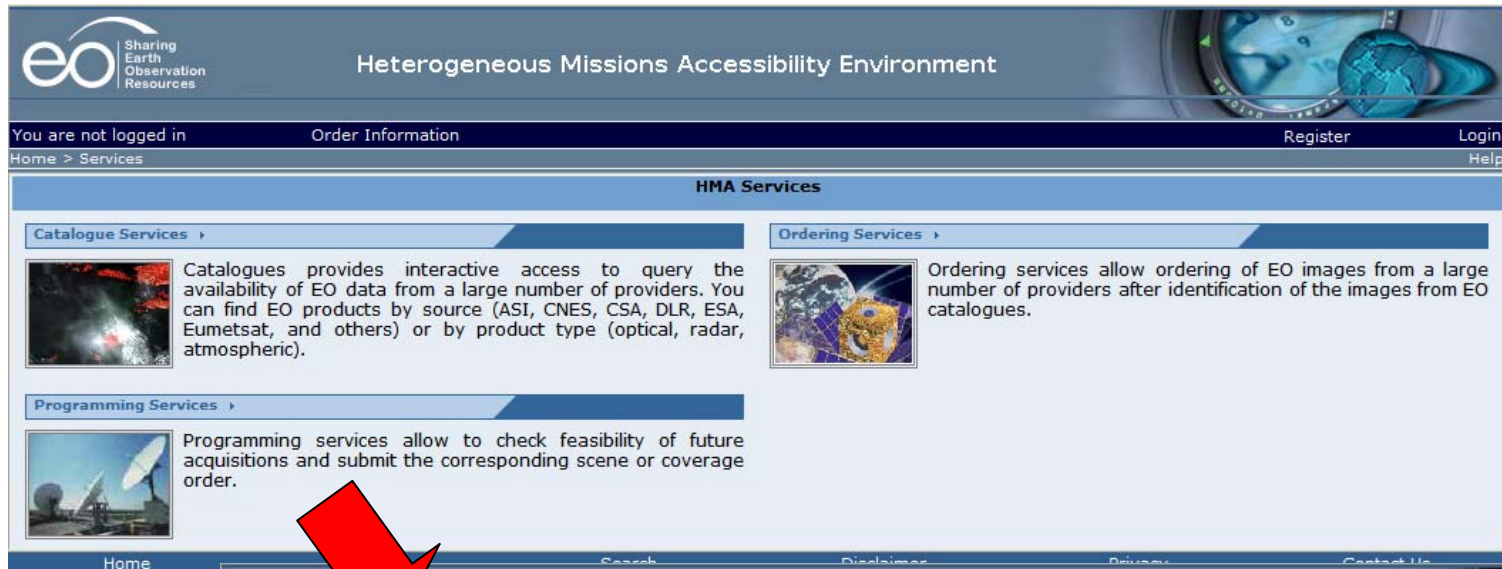






- "Sensor Planning" service
 - Access SPS (SPS Profile for EO by Spot Image)
 - Retrieve result via WCS (Web Coverage Server)

- "SWE Controller" service
 - HM Service
 - Access SPS
 - If conversion with WCTS (Tarifa) then result on WCS
 - If no conversion then result via WMS



eo Sharing Earth Observation Resources

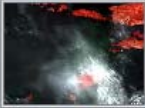
Heterogeneous Missions Accessibility Environment

You are not logged in Order Information Register Login

Home > Services Help


HMA Services

Catalogue Services




Catalogues provides interactive access to query the availability of EO data from a large number of providers. You can find EO products by source (ASI, CNES, CSA, DLR, ESA, Eumetsat, and others) or by product type (optical, radar, atmospheric).

Ordering Services



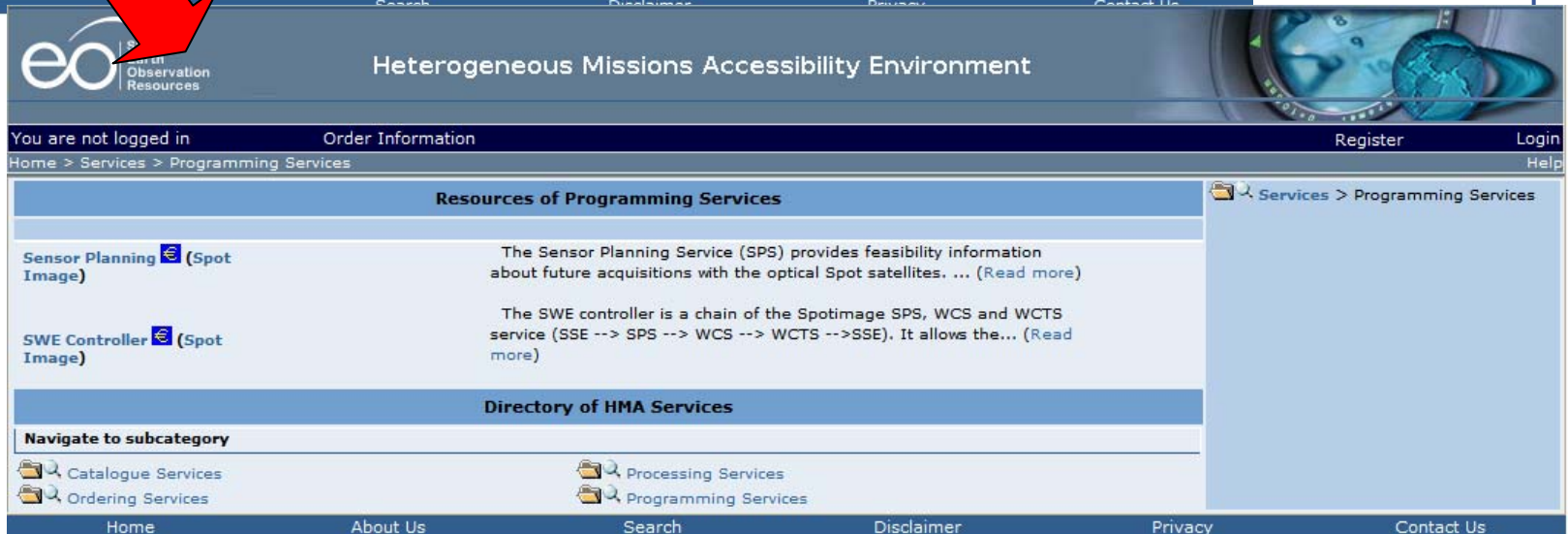
Ordering services allow ordering of EO images from a large number of providers after identification of the images from EO catalogues.

Programming Services



Programming services allow to check feasibility of future acquisitions and submit the corresponding scene or coverage order.

Home Search Disclaimer Privacy Contact Us





eo Sharing Earth Observation Resources

Heterogeneous Missions Accessibility Environment

You are not logged in Order Information Register Login





Home > Services > Programming Services Help

Resources of Programming Services


Sensor Planning  (Spot Image)	The Sensor Planning Service (SPS) provides feasibility information about future acquisitions with the optical Spot satellites. ... (Read more)
SWE Controller  (Spot Image)	The SWE controller is a chain of the Spotimage SPS, WCS and WCTS service (SSE --> SPS --> WCS --> WCTS --> SSE). It allows the... (Read more)

Directory of HMA Services


Navigate to subcategory

-  Catalogue Services
-  Processing Services
-  Ordering Services
-  Programming Services

Home About Us Search Disclaimer Privacy Contact Us



Heterogeneous Missions Accessibility Environment



You are not logged in
Order Information
Register
Login

Home > Services > Programming Services > Sensor Planning
Help

Informations

Service

Sensor Planning

Type(s)	HMA Services Programming Services	Related Resource(s) Organisation Spot Image
Abstract	The Sensor Planning Service (SPS) provides feasibility information about future acquisitions with the optical Spot satellites. The service integration in the HMA Portal is the result of a joint Spot Image and Spacebel activity in the OGC OWS-4 testbed.	
Owner	Spot Image	
Keywords	OGC SPS, SWE, CoMu	
Status	testing	
Technology	The service interface is a profile of the OGC SPS service for Earth Observation defined by Spot Image in the framework of the OWS-4 testbed activities.	
Delivery Time	1.0 Days	
Price	determined by Request For Quotation	
Subscription	Not supported	
Warranty		
Quality of Service		

Customer Reviews

Number of Reviews	0
Average Rating	No Rating

Home
About Us
Search
Disclaimer
Privacy
Contact Us

Sharing Earth Observation Resources

Heterogeneous Missions Accessibility Environment

User: tnn
Order List
My Profile
Log out

Home > Services > SWE Controller > Request For Quotation
Help

SWE Controller Request For Quotation

Survey Period:

From Date

Date: 2006 Nov 20

Time: 08 00 +01:00

To Date

Date: 2006 Dec 30

Time: 08 00 +01:00

Image Mode: COLOR

Max Cloud Coverage: 10

Max Snow Coverage: 10

Resolution: 2.5

Incidence Angle: Unspecified

Country: Albania

Place Name: Beirut

Comment:

Geometric Processing: Ortho

Map Area of Interest

Services

(Click here to add a WMS ...)

World Map (1.1.1)

Available layers

Ocean features

Selected layers

Hillshading (visible)

Topography (visible)

Bathymetry (visible)

Styles

(Default style)

Map Settings

Update Save Load

Scale: 500 km

Please fill in the following fields to request

Additional Geometric Processing parameter in "SweController" specifies whether the result image is to be processed. The Spotimage SPS will return raw image at level2 via an internal WCTS. The possible options for this parameters are: N/A, Ortho.

esa Sensor Planning – Feasibility Results

Browser: Mozilla Firefox
 URL: http://hma.spacebel.be/portal/order/OrderForwardUI.jsp?orderStatusSubStatus=A2808281;RFQ;Completed

Home > Services > Sensor Planning > Order

Sensor Planning : Order

Map Settings:

- Services: (Click here to add a WMS ...)
- World Map (1,1,1)
- Available layers: Ocean features
- Selected layers: Hillshading (visible), Topography (visible), Bathymetry (visible)
- Styles: (Default style)
- Map: Update, Save, Load
- Scale: 100 km

RFQ result

Select one of the following offers.

Id	Satellite	Resolution	GeoLocation	SuccessRate
<input type="checkbox"/> PS2	SPOTS	2.5	34.81528 35.222027 35.453506 35.0917 35.29618 34.56525 34.661972 34.695194	75
<input type="checkbox"/> PS3	SPOTS	2.5	34.66836 34.729958 35.30286 34.600002 35.146954 34.07339 34.516384 34.202976	65
<input type="checkbox"/> PS4	SPOTS	2.5	34.52269 34.237537 35.15354 34.10794 34.999012 33.581173 34.371998 33.71041	72
<input checked="" type="checkbox"/> PS5	SPOTS	2.5	35.40962 35.223095 36.046303 35.089878 35.88515 34.563854 35.252453 34.69663	81
<input checked="" type="checkbox"/> PS6	SPOTS	2.5	35.262665 34.73101 35.895622 34.598206 35.73596 34.07201 35.106895 34.204388	88
<input type="checkbox"/> PS7	SPOTS	2.5	35.11696 34.23857 35.746273 34.106167 35.588055 33.579807 34.962543 33.711796	68
<input type="checkbox"/> PS8	SPOTS	2.5	34.97246 33.745785 35.598213 33.61377 35.441402 33.087246 34.819366 33.218857	62
<input type="checkbox"/> PS9	SPOTS	2.5	35.998405 35.222332 36.6354 35.091145 36.476746 34.564835 35.843754 34.69562	59

Order identifier: A2808281
 Price: 0.0 EUR

Please check your order information.
 You can continue ordering the selected service by selecting the Proceed button.

SPS Submit

HMA Portal - Order Information - Mozilla Firefox

File Edit View Go Bookmarks Tools Help

http://hma.spacebel.be/portal/order/OrderForwardUI.jsp?orderStatusSubStatus=A2809C81;Order;Completed


eo Sharing Earth Observation Resources

Heterogeneous Missions Accessibility Environment

User: tnn Order List My Profile Log out

Home > Order List > Order Result Information Help

Order Result Information



Map

Services
 (Define a WMS yourself ...) +
 World Map (1.1.1) -

Available layers
 Ocean features +

Selected layers
 Hillshading (visible) ▲
 Topography (visible) ▲
 Bathymetry (visible) ▼

Styles
 (Default style) ▼

Map Settings
 Update Save Load

Scale : 500 km

Order Result

Order Result: WMS Access URL

Request

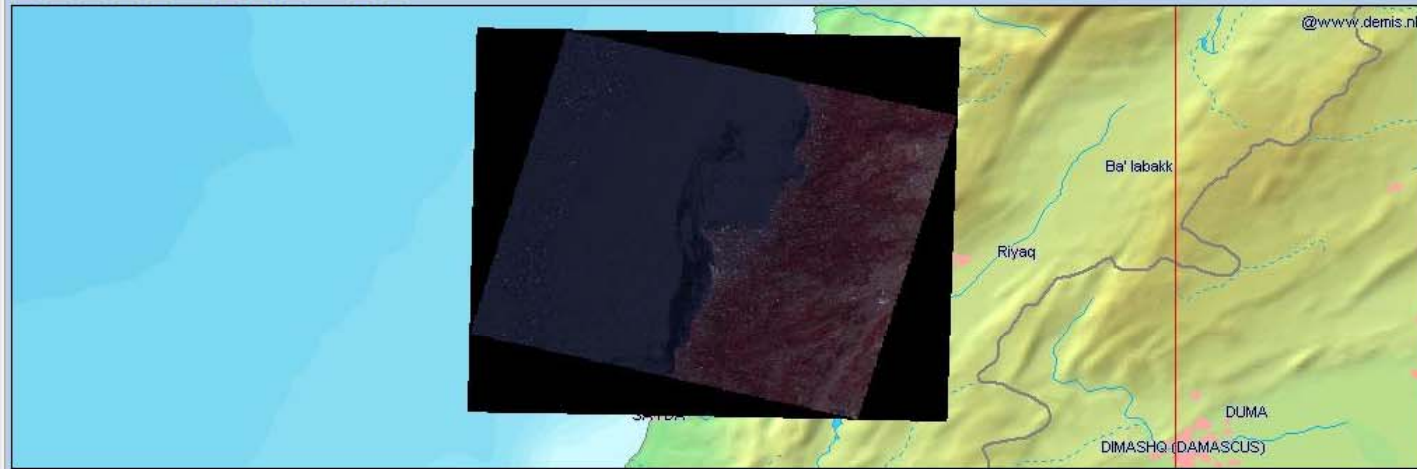
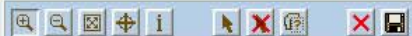
RFQ result: Successfully

Request

GetFeasibility
 dateParameters



Order Result Information



Map

Services
 (Click here to add a WMS ...)
 Tonic Map Server (1.1.1)
 World Map (1.1.1)

Available layers
 6202413312670339830

Selected layers
 6202413312670339830 (visible)
 Cities (visible)
 Streams (visible)

Styles
 (Default style)

Map **Settings**

Scale : 25 km

Order Result

Order Result:	WMS Access URL
Request	
RFQ result:	
RFQ Status :	Successfully
Request	
GetFeasibility	
dateParameters	
InputParameter	
component	
value	
Time	2006-11-20T08:00+01:00

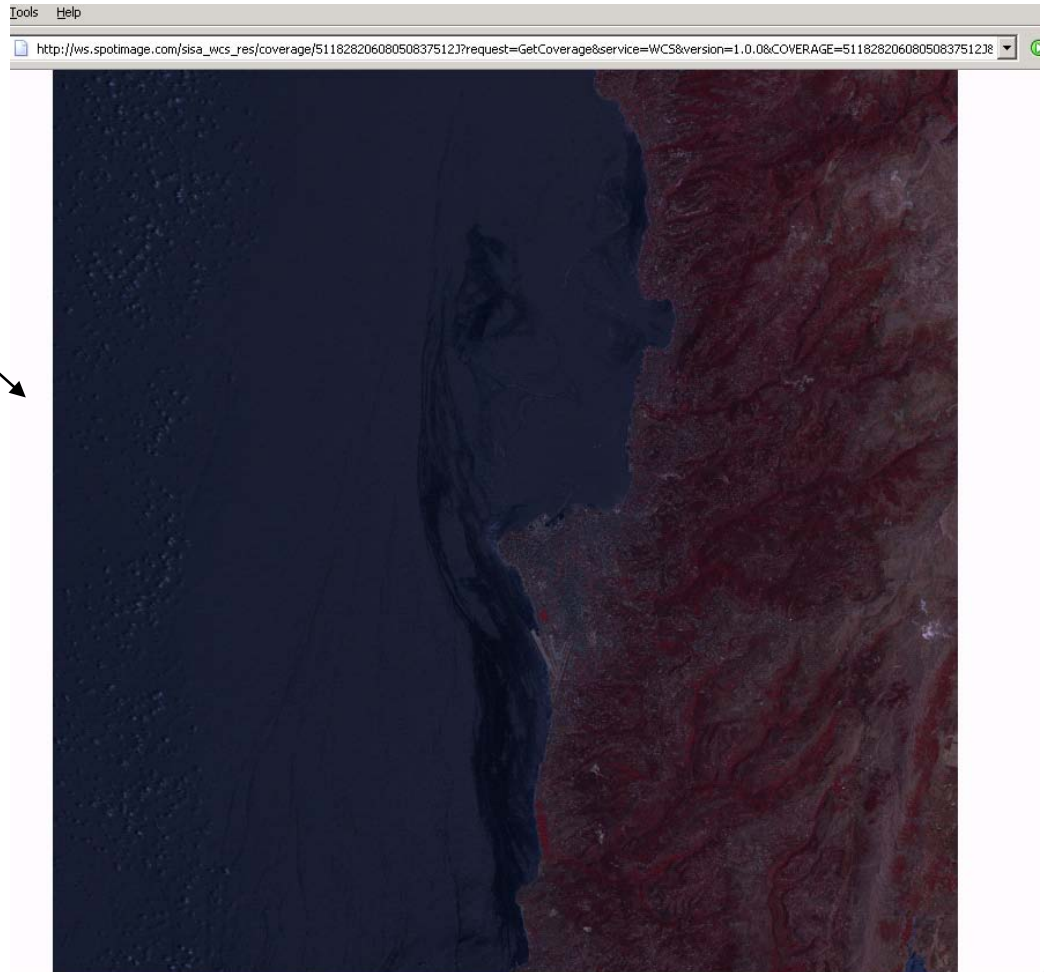
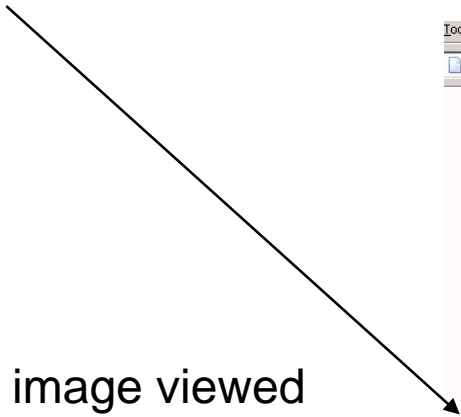
Order Result:	WCS Access URL
	Request
	RFQ result:
RFQ Status :	Successfully
	Request

An arrow points from the 'WCS Access URL' cell to the URL provided below the screenshot. The browser's status bar at the bottom shows 'Scale : 250 km'."/>

http://ws.spotimage.com/sisa_wcs_res/coverage/51182820608050837512J?request=GetCoverage&service=WCS&version=1.0.0&COVERAGE=51182820608050837512J&store=false&CRS=Image&RESPONSE_CRS=Image&BBOX=0,0,6000,6000&WIDTH=1000&HEIGHT=1000&BAND=band1,band2,band3&FORMAT=GeoTIFF&EXCEPTIONS=application/vnd.ogc.se_xml

http://ws.spotimage.com/sisa_wcs_res/coverage/51182820608050837512J?request=GetCoverage&service=WCS&version=1.0.0&COVERANGE=51182820608050837512J&store=false&CRS=Image&RESPONSE_CRIS=Image&BBOX=0,0,6000,6000&WIDTH=1000&HEIGHT=1000&BAND=band1,band2,band3&FORMAT=GeoTIFF&EXCEPTIONS=application/vnd.ogc.se_xml

Resulting image viewed
with FireFox browser.



- Prototype:
 - Programming services used in OWS-4 demonstration Spot Image / Spacebel / ESA in December 2006.

- Further work:
 - (HMA) SPS Profile for EO to be finalised and submitted to OGC.
 - ESA CoMu project will propose and prototype a multi-mission SPS service with multiple feasibility levels.