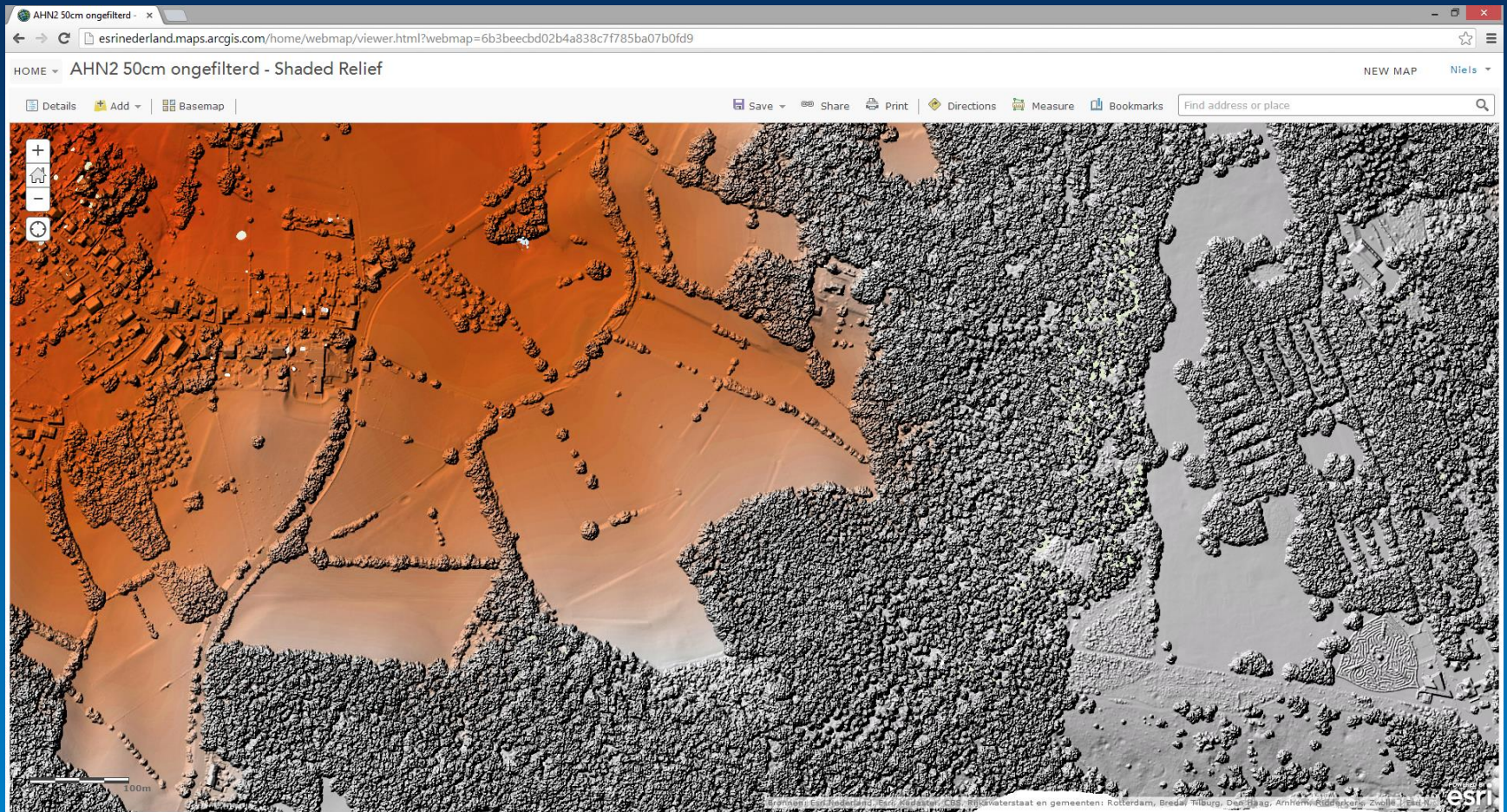


# **Puntenwolken, wat kan je er mee?**

(in ArcGIS)

**Niels van der Vaart**

AHN/NCG studiemiddag, Amersfoort, 28 januari 2015



**Waarom puntenwolken?**

Zijn de AHN-rasters niet goed genoeg?

```

AHN2 gefilterde punten x geodata.nationaalgeoregi x
geodata.nationaalgeoregister.nl/ahn2/atom/ahn2_gefilterd.xml

This XML file does not appear to have any style information associated with it. The document tree is shown below.
▼ <feed xmlns="http://www.w3.org/2005/Atom" xmlns:georss="http://www.georss.org/georss">
  ▼ <id>
    http://geodata.nationaalgeoregister.nl/ahn2/atom/ahn2_gefilterd.xml
  </id>
  ▼ <title type="text" xml:lang="nl">
    Download Service van Actueel hoogtebestand Nederland (gefilterd) (AHN2)
  </title>
  <title>
    <subsubtitle type="text" xml:lang="nl">Voorgedefinieerde dataset download service</subsubtitle>
    <link href="http://geodata.nationaalgeoregister.nl/ahn2/atom/ahn2_gefilterd.xml" rel="self" type="application/xml" title="Dataset Feed" hreflang="nl"/>
    <link href="http://geodata.nationaalgeoregister.nl/atom/index.xml" rel="up" type="application/xml" title="Top Atom Download Service Feed" hreflang="nl"/>
  </author>
  <name>Servicedesk Data</name>
  <email>servicedesk-data@rws.nl</email>
  </author>
  ▼ <rights>
    http://creativecommons.org/publicdomain/zero/1.0/deed.nl
  </rights>
  <updated>2012-06-12T00:00:00.000Z</updated>
  ▼ <entry>
    <id>g01c1.laz.zip</id>
    ▼ <title type="text" xml:lang="nl">
      Download Service van Actueel hoogtebestand Nederland (gefilterd) (AHN2) g01c1.laz.zip
    </title>
    <content type="text">Downloadgrootte: 82,1 MB</content>
    <updated>2012-06-12T00:00:00.000Z</updated>
    <link href="http://geodata.nationaalgeoregister.nl/ahn2/extract/ahn2_gefilterd/g01c1.laz.zip" rel="alternate" type="application/x-compressed" hreflang="nl" length="86110751"/>
    <link href="http://geodata.nationaalgeoregister.nl/ahn2/extract/ahn2_gefilterd/g01c1.laz.zip" hreflang="nl"/>
    </rights>
    http://creativecommons.org/publicdomain/zero/1.0/deed.nl
    </rights>
    <category term="http://www.opengis.net/def/crs/EPSG/0/28992" label="Amersfoort / RD New"/>
    <georss:polygon>50.6 3.1 50.6 7.3 53.7 7.3 53.7 3.1 50.6 3.1</georss:polygon>
  </entry>
  ▼ <entry>
    <id>g01c2.laz.zip</id>
    ▼ <title type="text" xml:lang="nl">
      Download Service van Actueel hoogtebestand Nederland (gefilterd) (AHN2) g01c2.laz.zip
    </title>
    <content type="text">Downloadgrootte: 215,3 MB</content>
    <updated>2012-06-12T00:00:00.000Z</updated>
    <link href="http://geodata.nationaalgeoregister.nl/ahn2/extract/ahn2_gefilterd/g01c2.laz.zip" rel="alternate" type="application/x-compressed" hreflang="nl" length="225777789"/>
    <link href="http://geodata.nationaalgeoregister.nl/ahn2/extract/ahn2_gefilterd/g01c2.laz.zip" hreflang="nl"/>
    </rights>
    http://creativecommons.org/publicdomain/zero/1.0/deed.nl
    </rights>
    <category term="http://www.opengis.net/def/crs/EPSG/0/28992" label="Amersfoort / RD New"/>
    <georss:polygon>50.6 3.1 50.6 7.3 53.7 7.3 53.7 3.1 50.6 3.1</georss:polygon>
  </entry>
  ▼ <entry>
    <id>g01d1.laz.zip</id>
    ▼ <title type="text" xml:lang="nl">
      Download Service van Actueel hoogtebestand Nederland (gefilterd) (AHN2) g01d1.laz.zip
    </title>
    <content type="text">Downloadgrootte: 293,7 MB</content>
    <updated>2012-06-12T00:00:00.000Z</updated>
    <link href="http://geodata.nationaalgeoregister.nl/ahn2/extract/ahn2_gefilterd/g01d1.laz.zip" rel="alternate" type="application/x-compressed" hreflang="nl" length="307985755"/>
    <link href="http://geodata.nationaalgeoregister.nl/ahn2/extract/ahn2_gefilterd/g01d1.laz.zip" hreflang="nl"/>
    </rights>
    http://creativecommons.org/publicdomain/zero/1.0/deed.nl
    </rights>
    <category term="http://www.opengis.net/def/crs/EPSG/0/28992" label="Amersfoort / RD New"/>
    <georss:polygon>50.6 3.1 50.6 7.3 53.7 7.3 53.7 3.1 50.6 3.1</georss:polygon>
  </entry>
</feed>

```

# Hoe kom ik er aan?

Download van PDOK...



ArcGIS AHN2 - Overzicht downlo...

esrinl-content.maps.arcgis.com/apps/OnePane/basicviewer/index.html?appid=917565db27be4283989da1d64cf437a4

## AHN2 - Overzicht download links

Details

Deze kaart geeft een overzicht van alle beschikbare kaartbladen van het Actueel Hoogtebestand Nederland (AHN2). Het is mogelijk om door middel van een pop-up informatie over het desbetreffende kaartblad te krijgen. Via de pop-up kunt u ook gemakkelijk de verschillende AHN2-bestanden downloaden.

NB: Zodra u op een link klikt om het bestand te downloaden, dan doet u dit direct bij PDOK. De links verwijzen allemaal direct naar de juiste kaartbladen in de Atomfeed-downloads van PDOK. Voor vragen/opmerkingen over de downloads (zoals snelheid, beschikbaar) adviseren wij u om contact op te nemen met PDOK, [www.pdok.nl](http://www.pdok.nl).

PDOK maakt onderscheid in de volgende AHN2-datasets:

- Het AHN2 0,5 meter maaielveldraster, opgevuld is bedoeld als maaielveldbestand, waarbij alle niet-maaielveld objecten (bomen, gebouwen, bruggen en andere objecten) uit de puntenwolk zijn verwijderd. Incidentele No-Data cellen zijn opgevuld.
- Het AHN2 0,5 meter maaielveldraster, niet-opgevuld is bedoeld als maaielveldbestand, waarbij alle niet-maaielveld objecten (bomen, gebouwen, bruggen en andere objecten) uit de puntenwolk zijn verwijderd. Er zijn geen verdere bewerkingen uitgevoerd.

Voor vragen over de downloads (zoals snelheid/beschikbaarheid) adviseren wij u om contact op te nemen met PDOK, [www.pdok.nl](http://www.pdok.nl).

**AHN2 - Maaielveld (raster):**

- AHN2 0,5 m. opgevuld
- AHN2 0,5 m. niet-opgevuld
- AHN2 5 m.

**AHN2 - Ruw (raster):**

- AHN2 0,5 m. opgevuld

**AHN2 - Puntenwolk:**

- AHN2 gefilterde puntenwolk
- AHN2 uitgefilterde puntenwolk

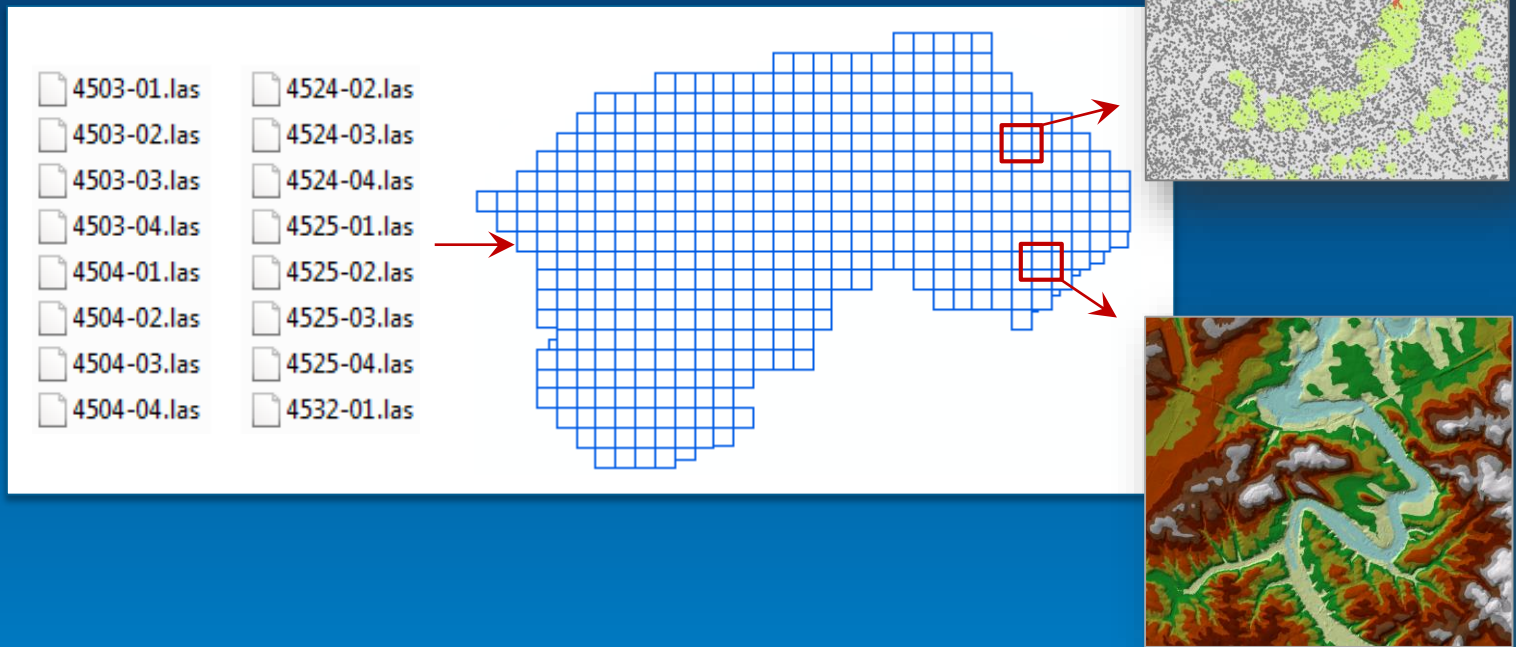
Zoom to

0 10 20 km

Bronnen: Esri Nederland, Esri, Kadaster, CBS, Rijkswaterstaat en gemeenten: Rotterdam, Breda, Tilburg,...

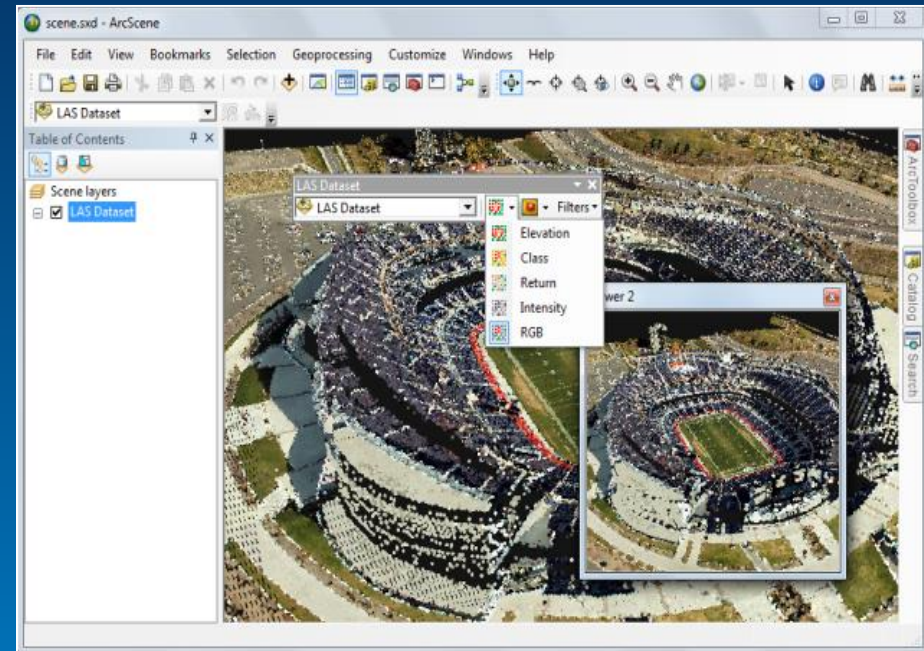
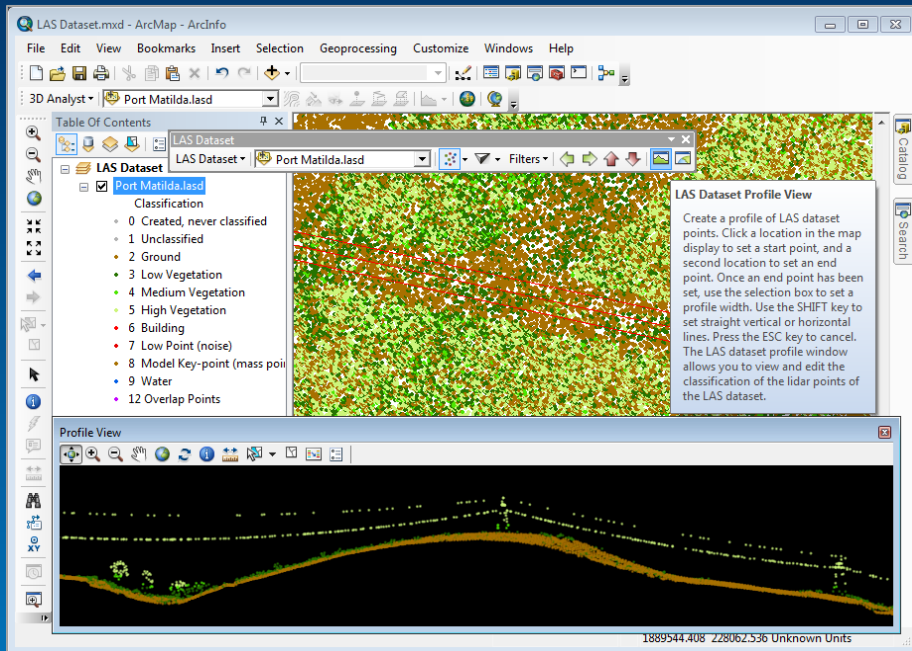
# Hoe kom ik er aan?

Download van PDOK met de handige app uit ArcGIS Online



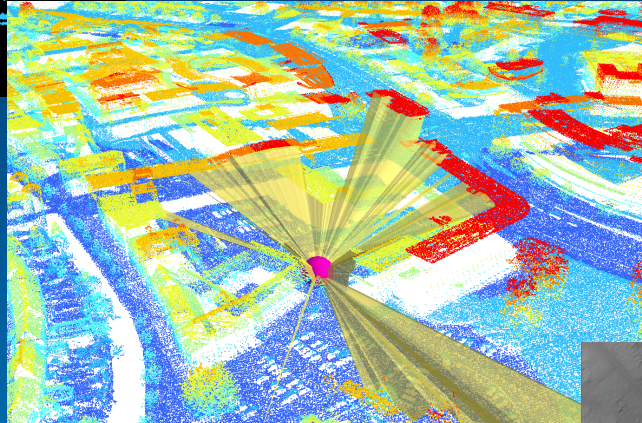
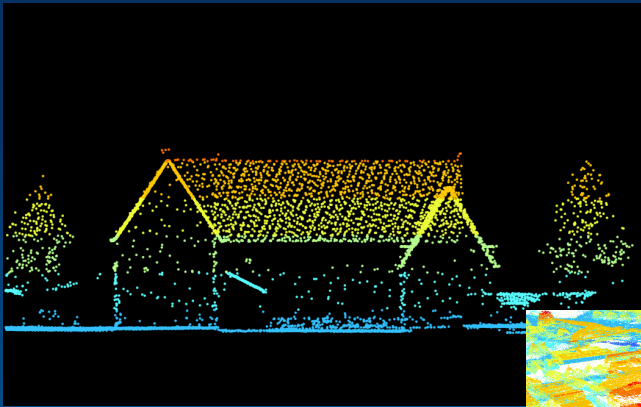
## Hoe kan ik het gebruiken?

Lidar data is in ArcGIS te gebruiken in een LAS Dataset



**Hoe kan ik het gebruiken?**

De LAS Dataset is zowel in 2D als in 3D te gebruiken



## Waarom puntenwolken?

Gebruik puntenwolken om de wereld te verkennen, te analyseren en te modelleren!

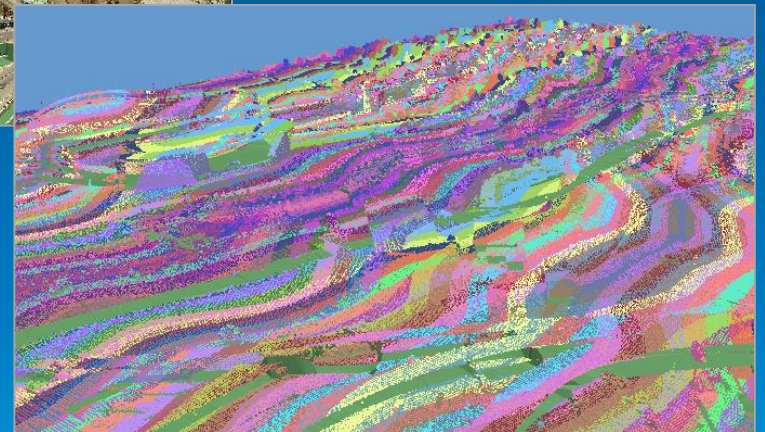
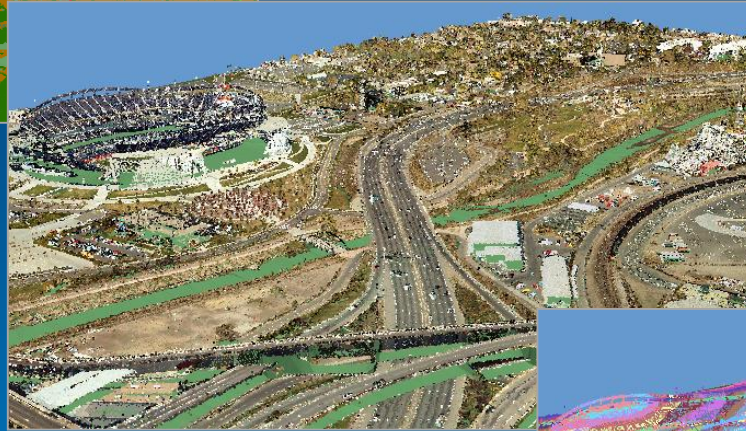
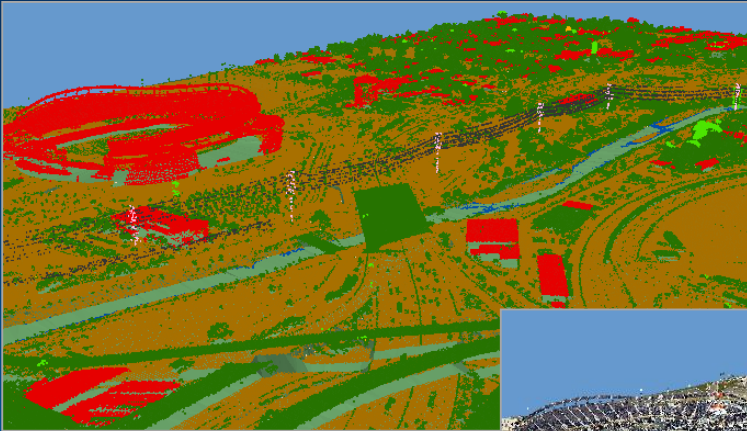




## **De wereld verkennen**

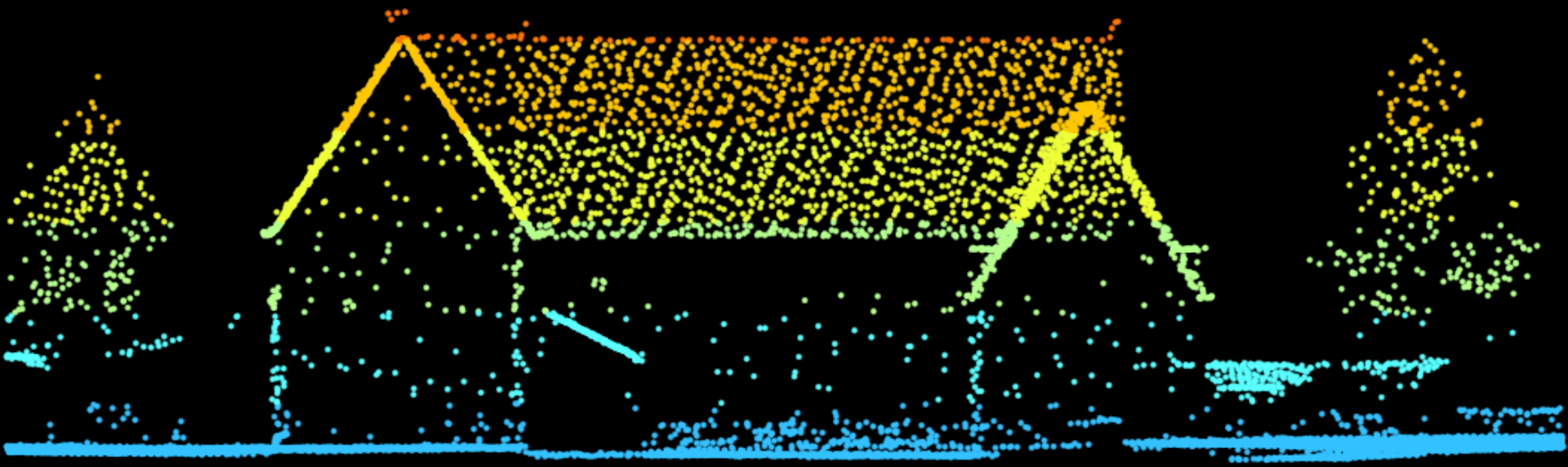
Puur en gedetailleerd model van de werkelijkheid





## De wereld verkennen

Verschillende visualisaties bieden  
verschillende kijke op de data





## De wereld verkennen




Duik in de punten voor een beter beeld van de omgeving

## 3D Analyst

### Conversion







- [-]  From LAS Dataset
  -  LAS Dataset to TIN

### Data Management


- [-]  LAS Dataset
  -  Change LAS Class Codes
  -  Set LAS Class Codes Using Features

## Data Management






### LAS Dataset

- [-]  LAS Dataset
  -  Add Files to LAS Dataset
  -  Create LAS Dataset
  -  LAS Dataset Statistics
  -  LAS Point Statistics as Raster
  -  Remove Files from LAS Dataset

### Layers and Table Views


-  Make LAS Dataset Layer

## LAS Ondersteuning

-  Add Surface Information
-  Interpolate Shape
-  Locate Outliers
-  Line Of Sight
-  Skyline

## Conversion
































### To Raster

-  LAS Dataset to Raster

**De wereld analyseren**

ArcGIS biedt veel tools voor het werken met puntenwolken

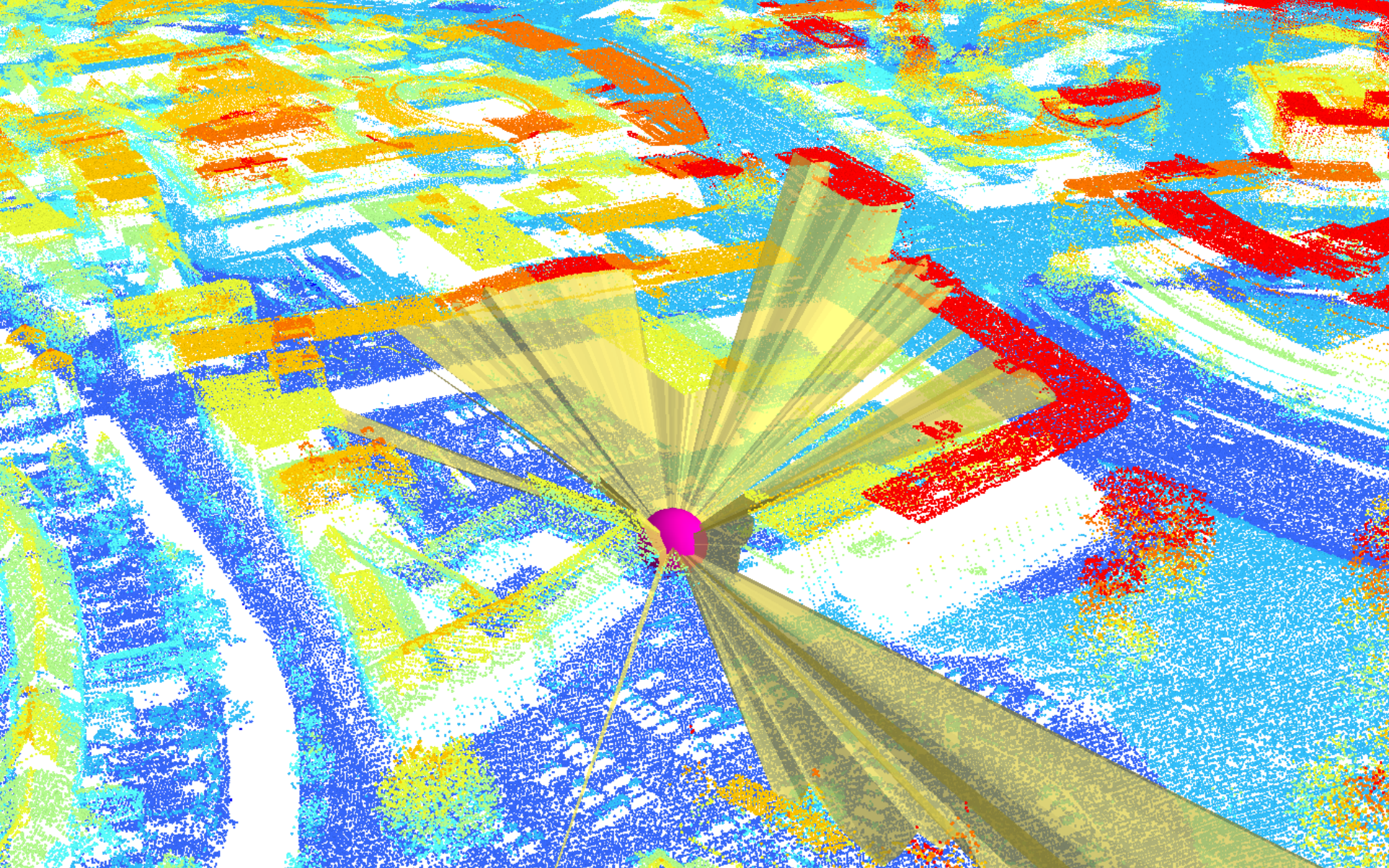


- [-]  3D Sample Tools.tbx
    - [-]  Conversion
      -  ASCII Text To LAS
      -  LAS Dataset To Point
      -  LAS Dataset To Tiled Rasters
      -  LAS File Extent As Polygon
      -  Mosaic To LAS Dataset
      -  Terrain To Tiled Rasters
    - [-]  Lidar Analysis
      -  LAS Point Statistics By Area
      -  Locate LAS Points By Proximity
      -  Sample Z From LAS
    - [-]  Lidar Classification
      -  Classify LAS By Height
      -  Classify LAS Ground Points
      -  Classify LAS Model Key Points
      -  Classify LAS Rooftop Points
- 
- [-]  Lidar Management
    -  Check LAS
    -  Create PRJ for LAS
    -  Delete PRJ For LAS
    -  LAS File Information
    -  LAS Optimizer
    -  LAS To LAS
    -  Rearrange LAS Points
  - [-]  TIN
    -  Closest TIN Node
    -  Set TIN Node Z
    -  Create Sun Skymap
    -  Simplify 3D Line

## De wereld analyseren

Custom tools op het resource center, voor de fanatieke gebruikers van puntenwolken

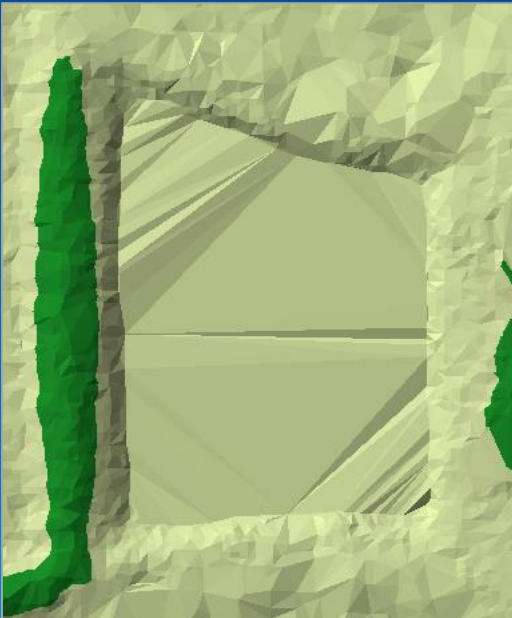
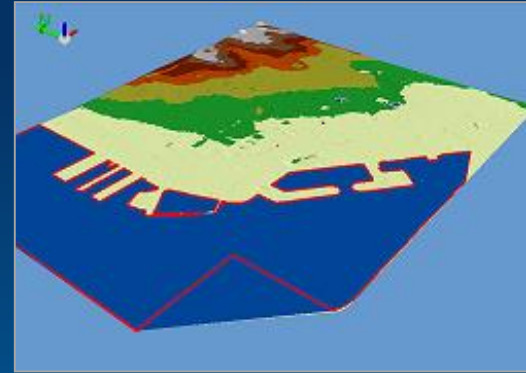
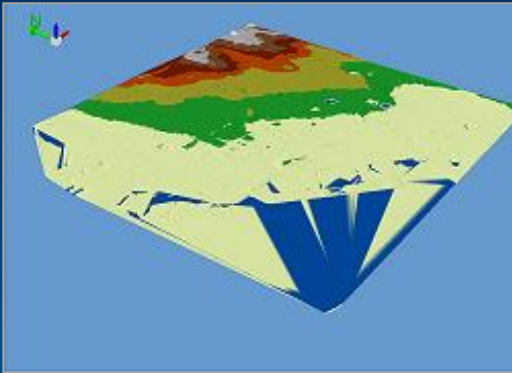




# De wereld analyseren

Verkrijg nieuwe inzichten uit data analyse

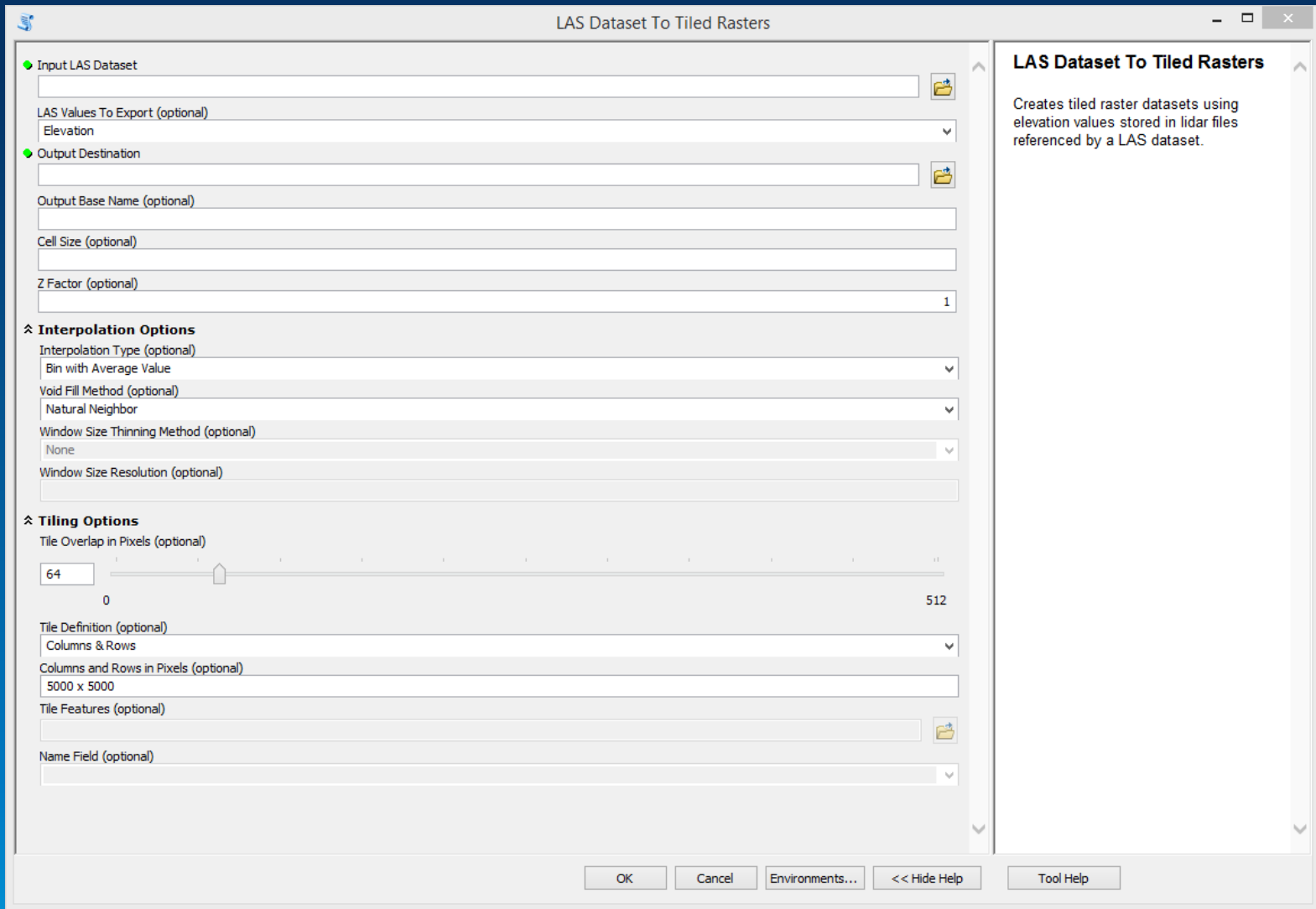




## De wereld modelleren

Maak een model van de wereld dat voldoet aan alle eigen wensen





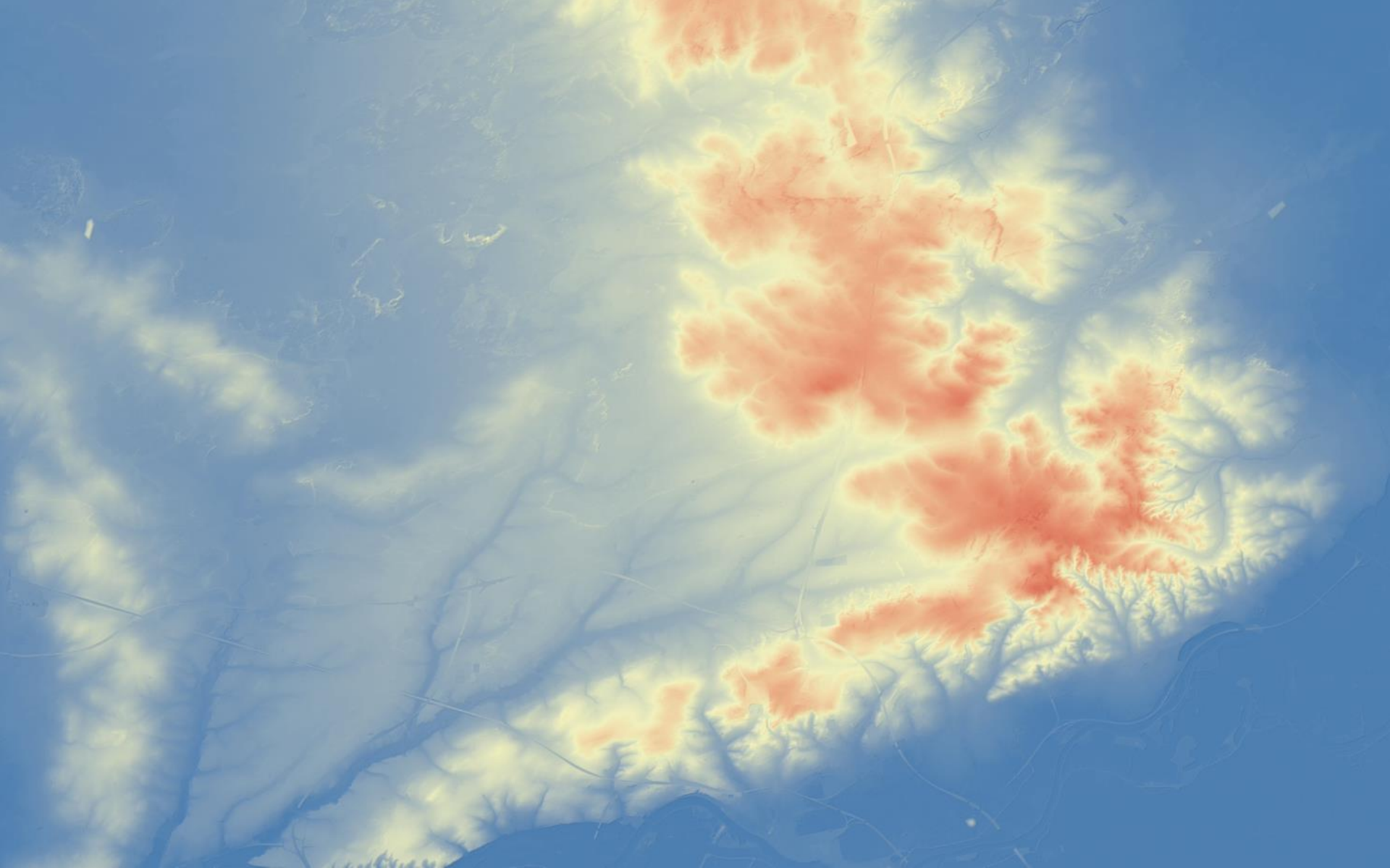
# De wereld modelleren

Tools om een LAS Dataset to converteren naar gangbare formaten



## **De wereld modelleren**

Gebruik afgeleide producten voor specifieke toepassingen



## **Daarom puntenwolken!**

Gebruik puntenwolken om de wereld te verkennen, te analyseren en te modelleren!





Understanding our world.