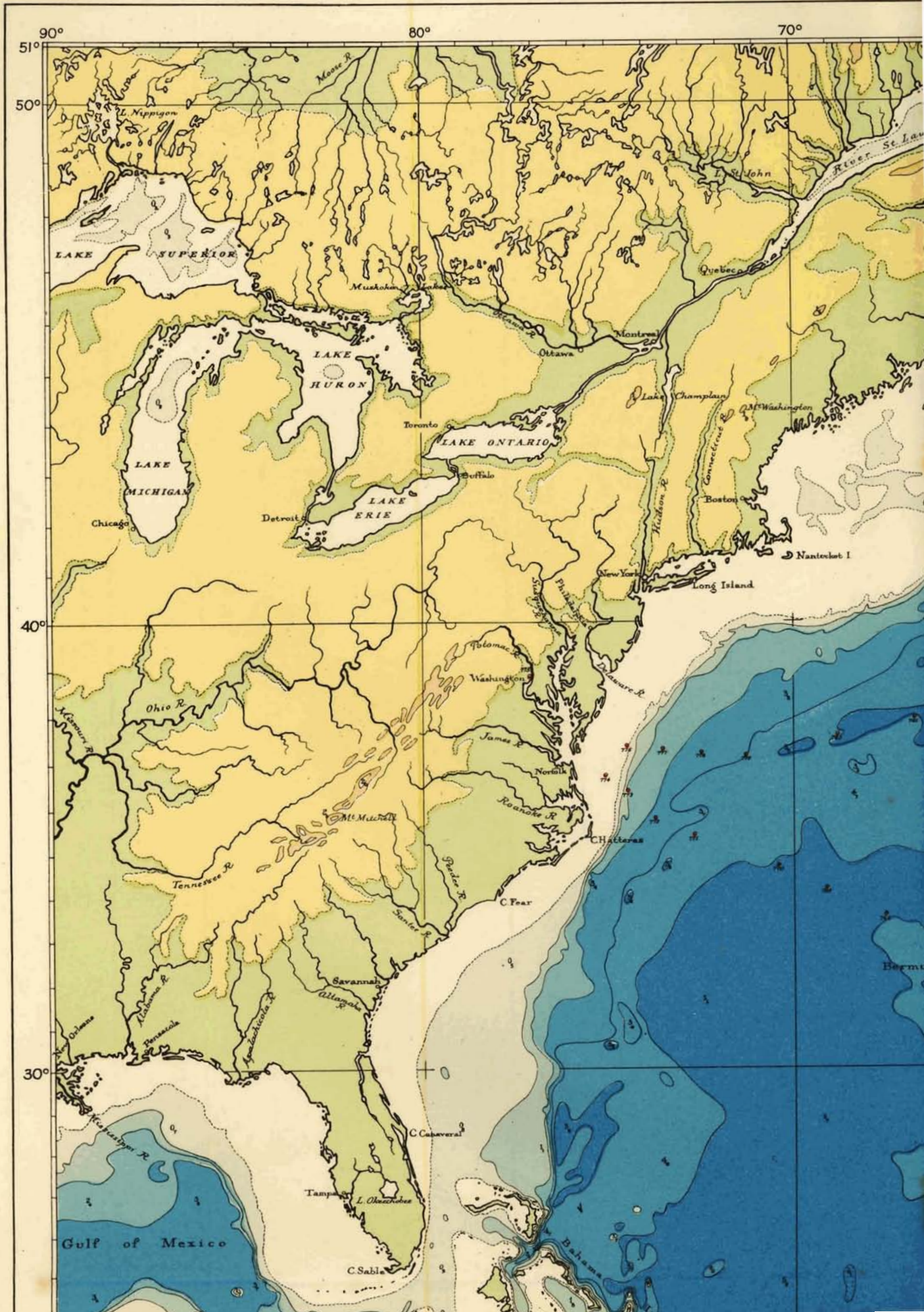
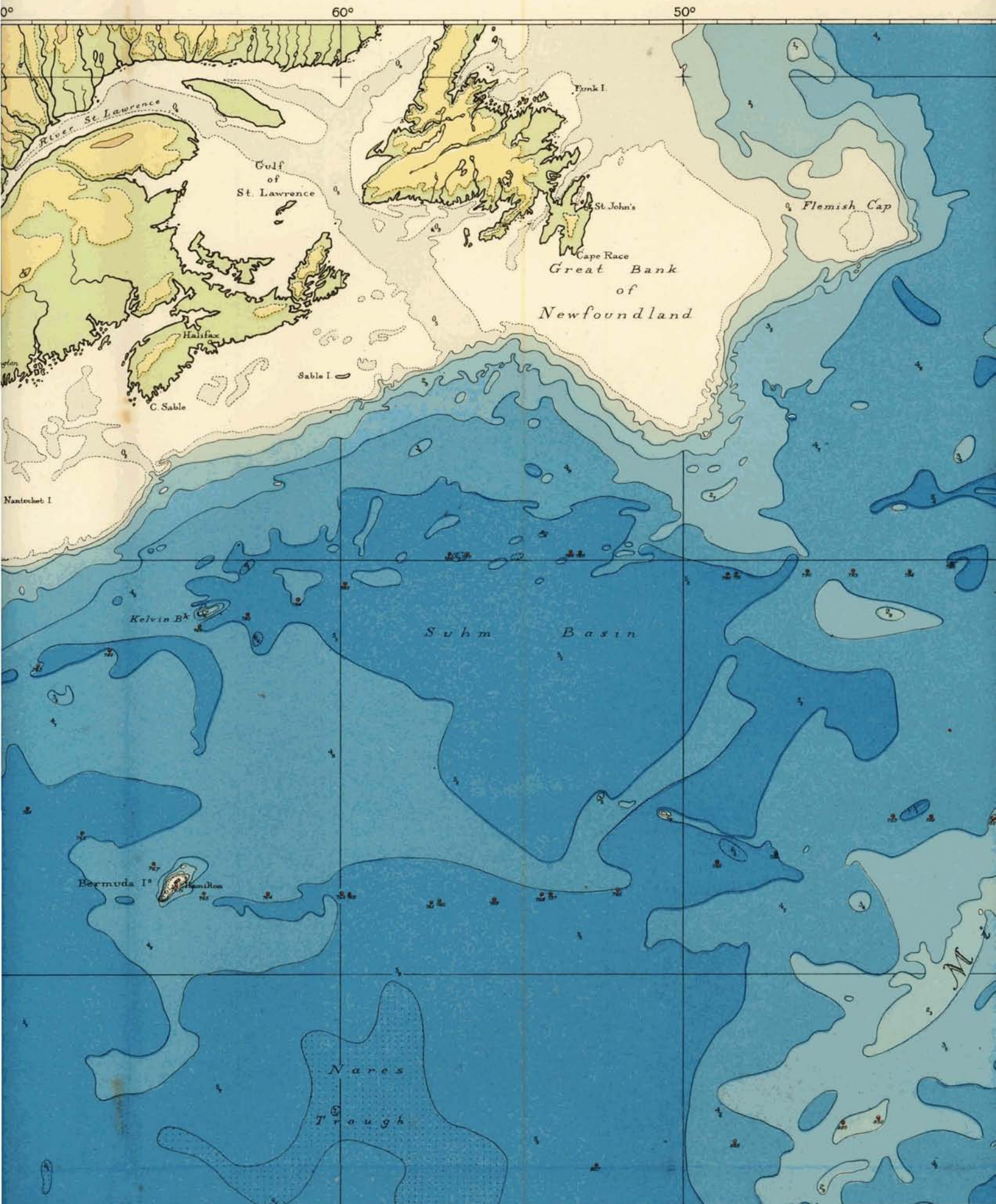


Scale 1:15,000,000 at the Equator.
Mercator Projection.
Depths and elevations in km.



BATHYMETRIC CHART OF THE ATLANTIC OCEAN SHOWING DUTCH MARITIME GRAVITY STATIONS

Nrs. 1-3: H.M.S. „K II” 1923. Nrs. 33-36: H.M.S. „K XI” 1925. Nrs. 43-79: H.M.S. „K XII”
Nrs. 487-579: H.M.S. „K XVIII” 1934-1935. Nrs. 725-815: H.M.S. „O 16” 1937



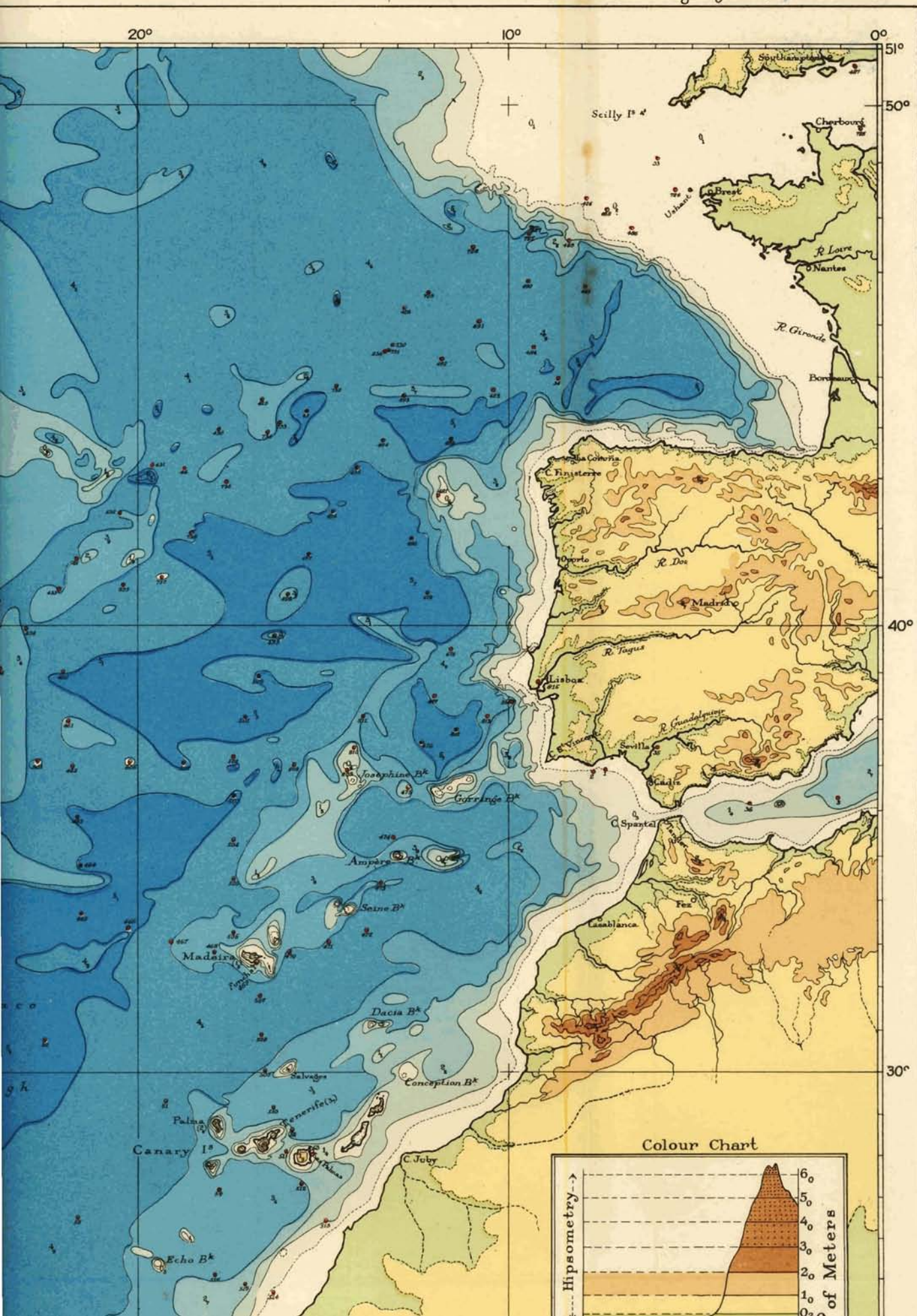
THE ATLANTIC OCEAN

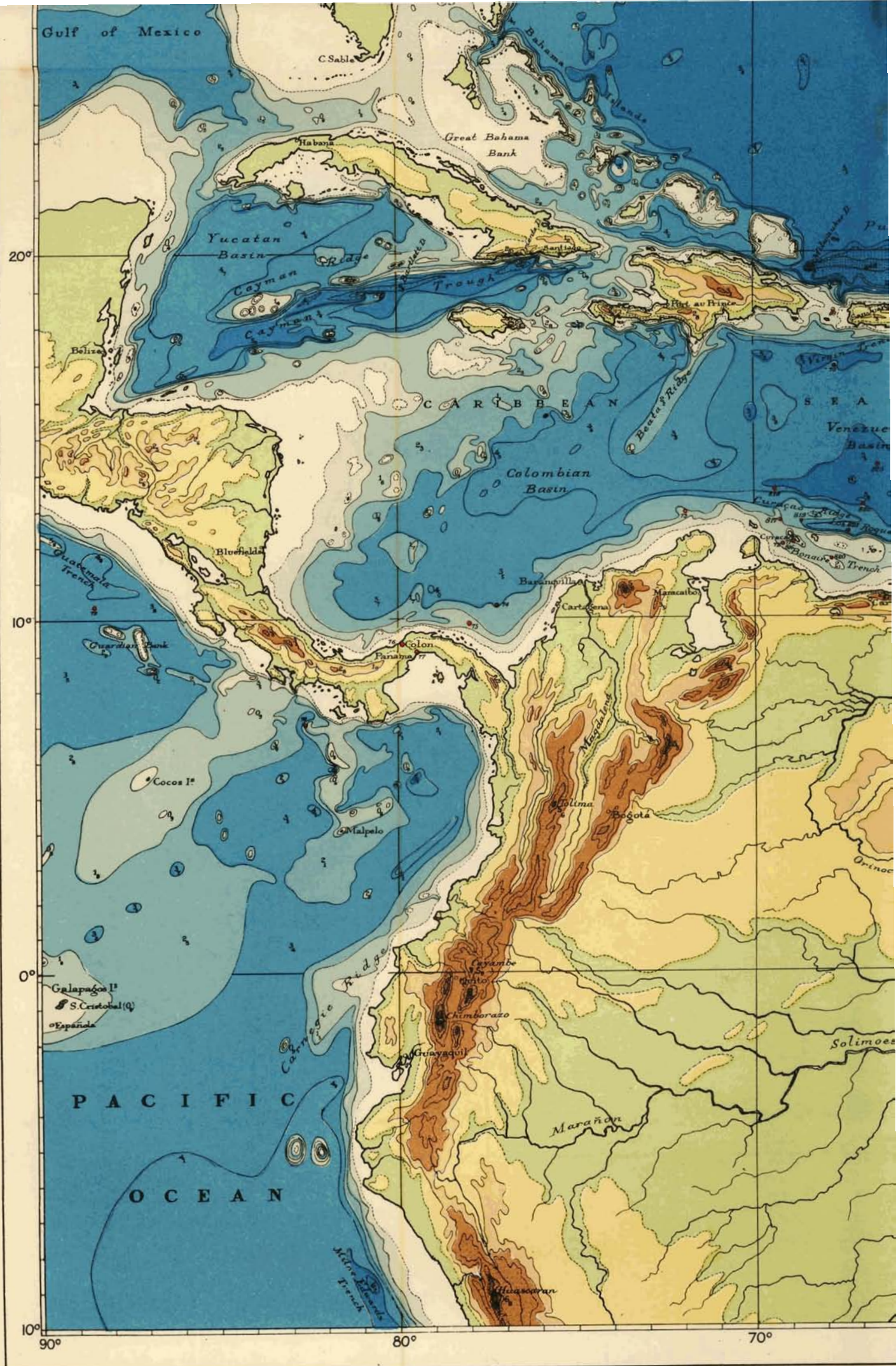
STATION STATIONS UP TO 1940

H.M.S. „K XIII” 1926. Nrs. 426 - 486 : H.M.S. „O 13” 1932.
„O 16” 1937. Nrs. 816 - 836 : H.M.S. „O 12” 1937.

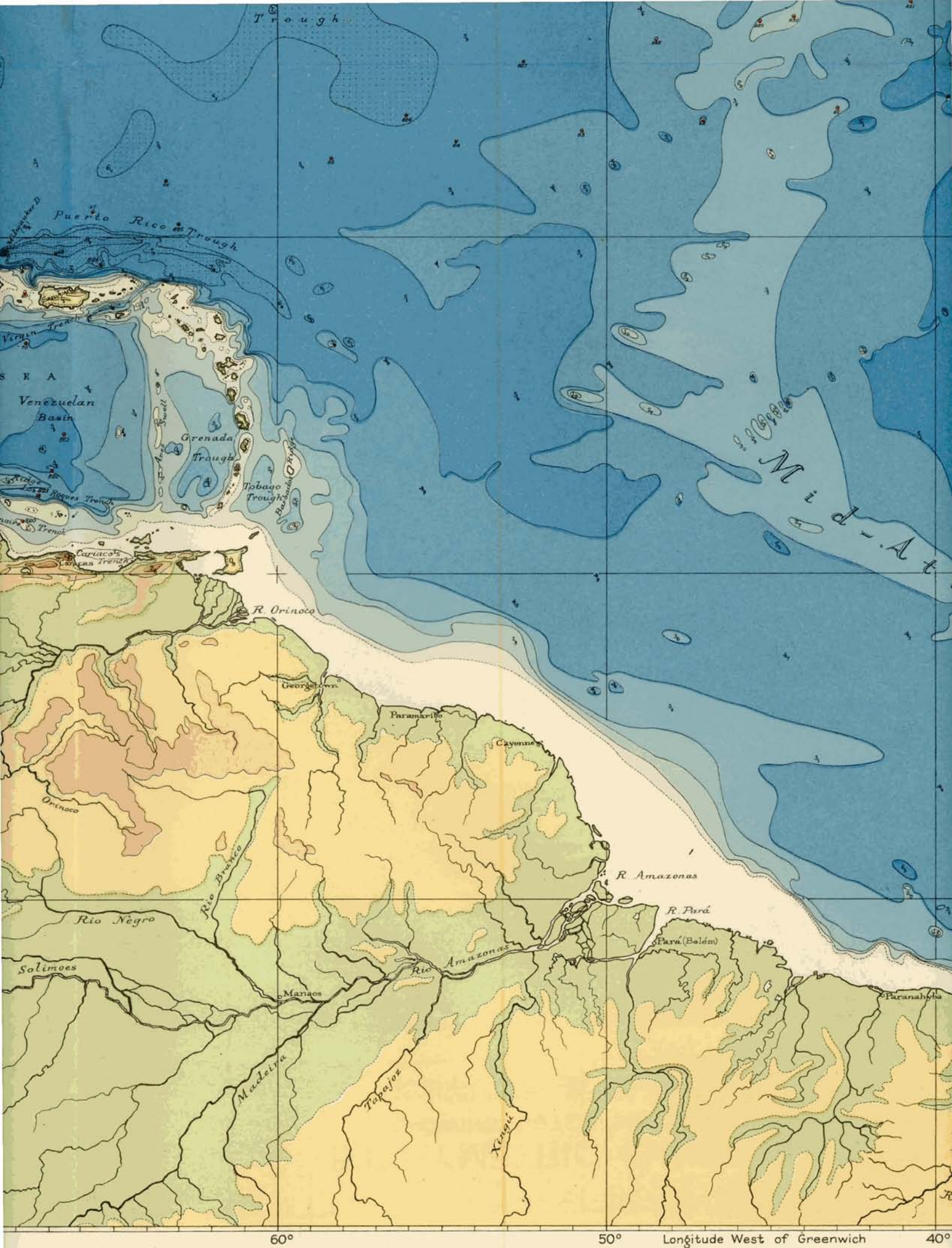


Compiled and drawn according to the „Carte Générale Bathymétrique des Océans” with corrections up to 1940 from various sources, i.e. mainly from U.S. Hydrographic Charts Nrs. 5486 & 5487 and from soundings by the „Altair” in 1938.





Drawn by J.W. Bloem. Printed by the Netherlands Topographic Service

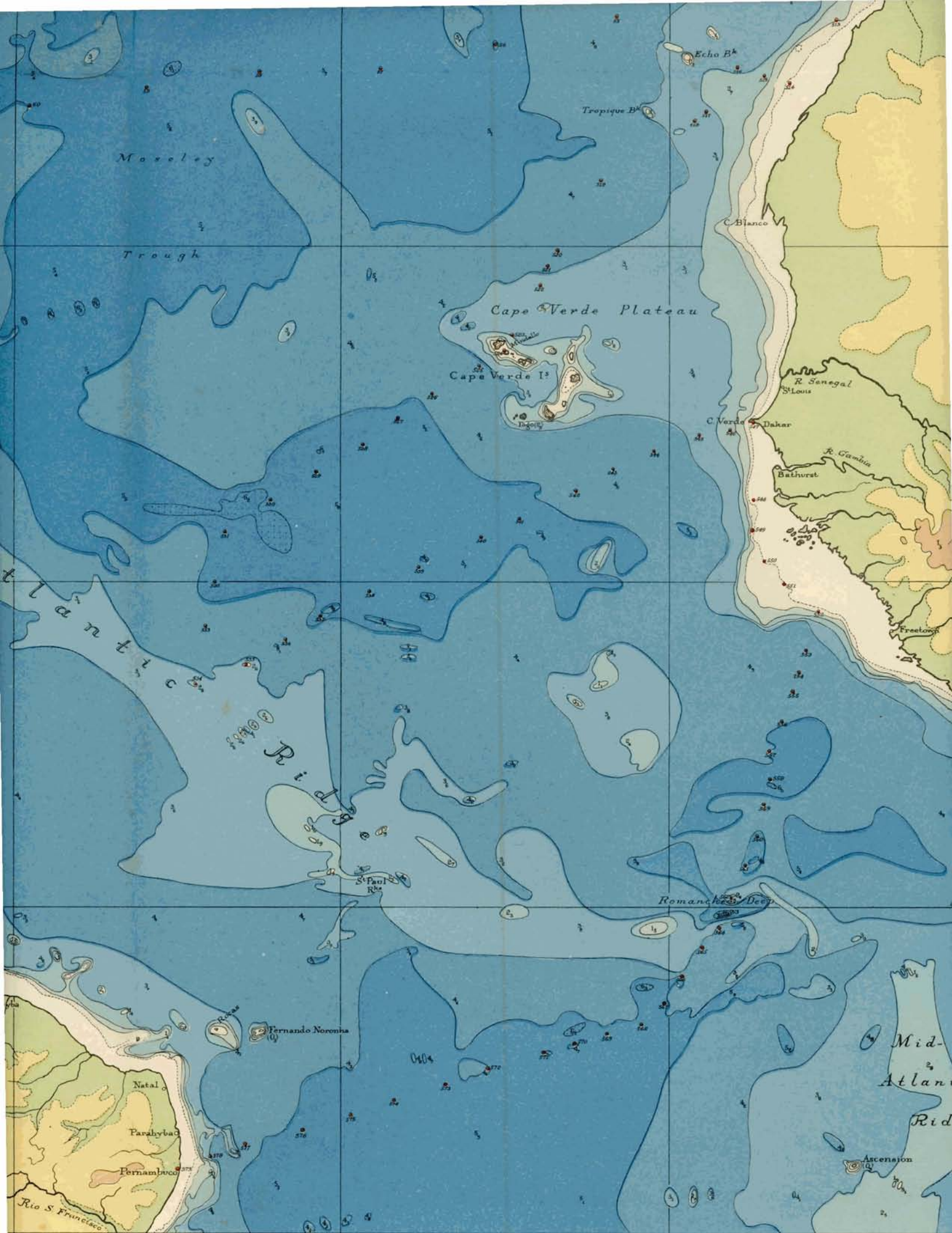


60°

50°

Longitude West of Greenwich

40°



Moseley

Trough

Cape Verde Plateau

Cape Verde I^s

Atlantic

Rio de São Francisco

St. Paul I^s

Romanche Deep

Fernando Noronha

Natal

Paratybad

Pernambuco

Rio S. Francisco

Tropique B^h

Echo B^h

C. Blanco

R. Senegal

St. Louis

C. Verde

R. Gambia

Bathurst

Freetown

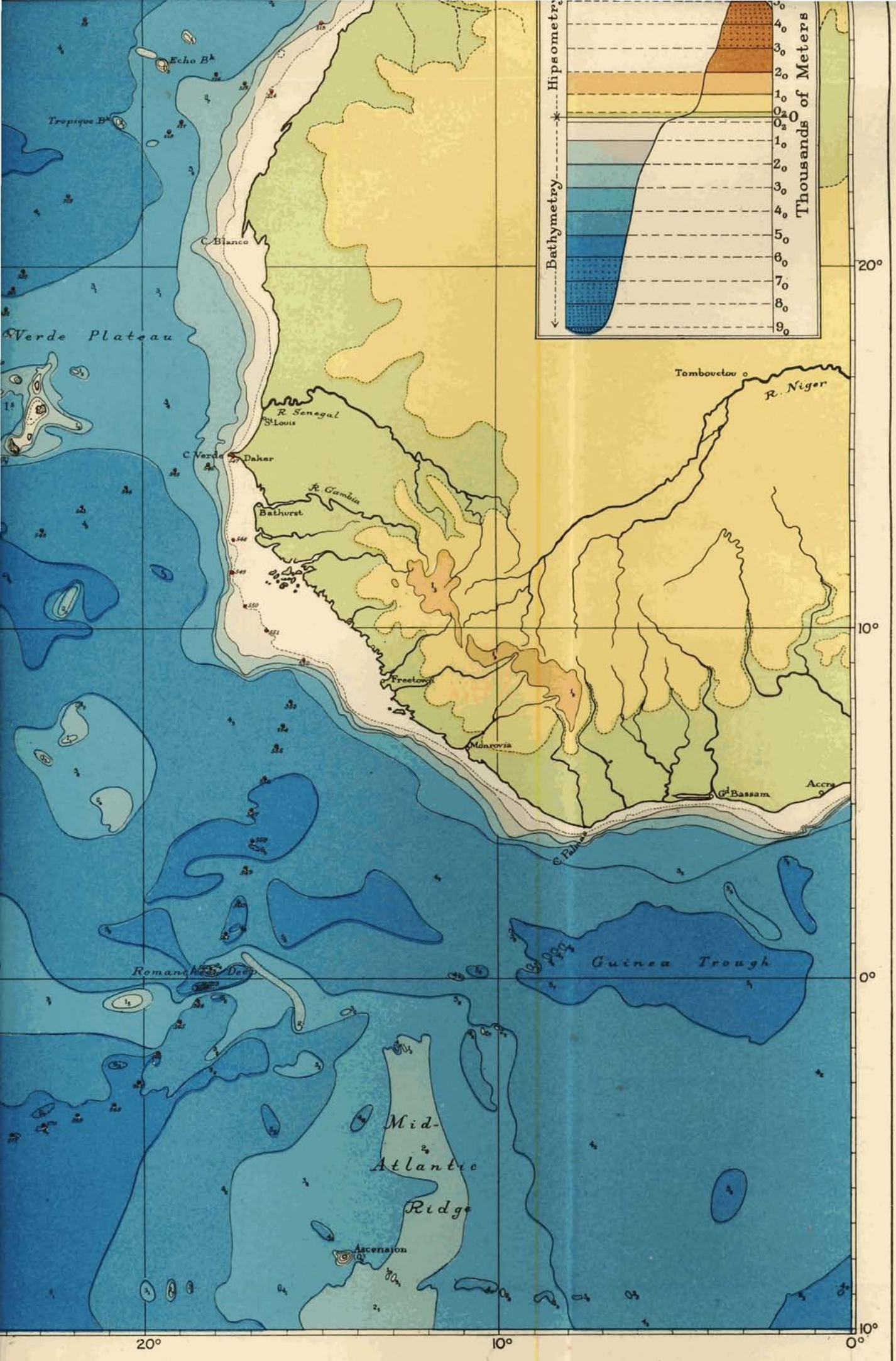
Mid-Atlantic Ridge

Ascension

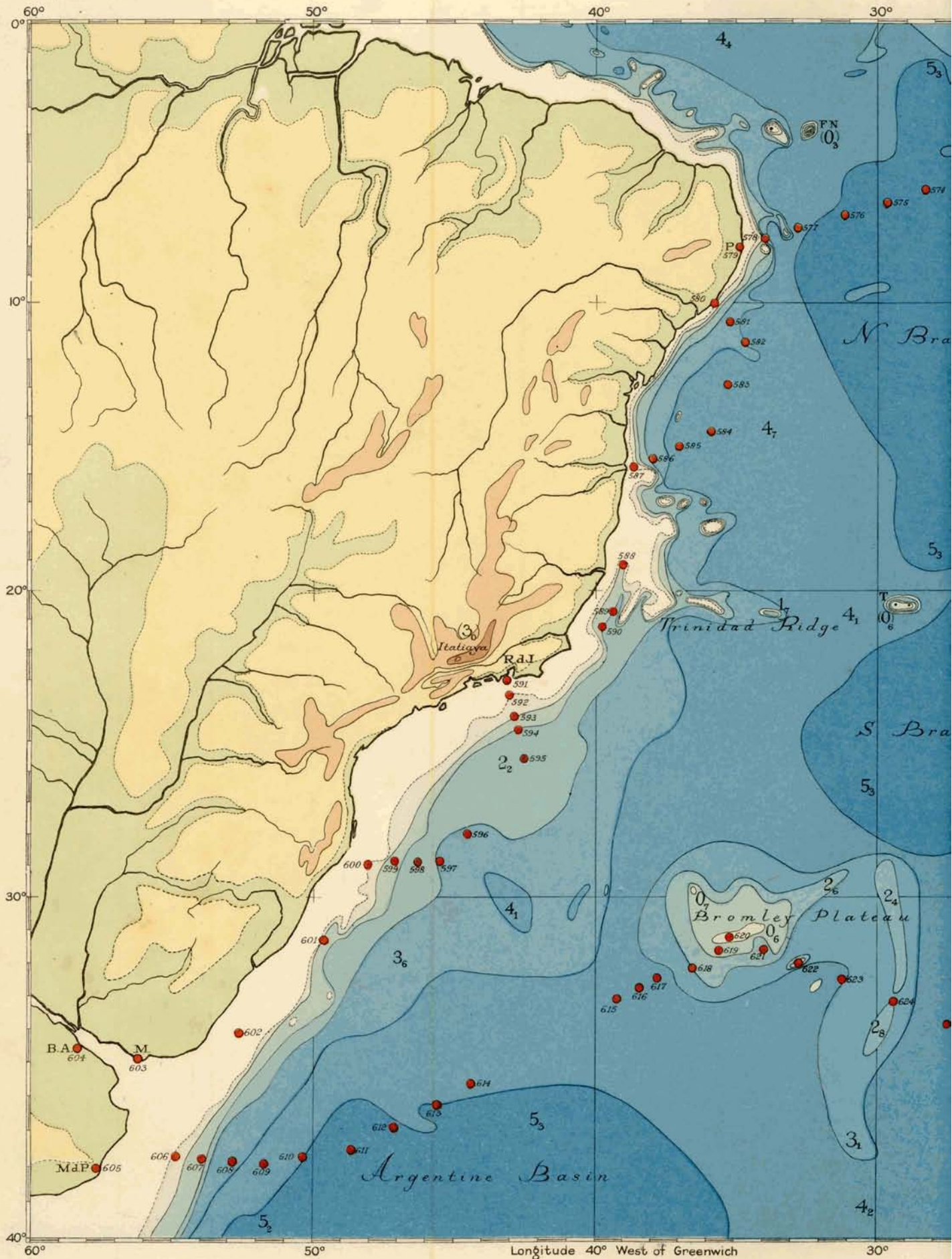
40°

30°

20°

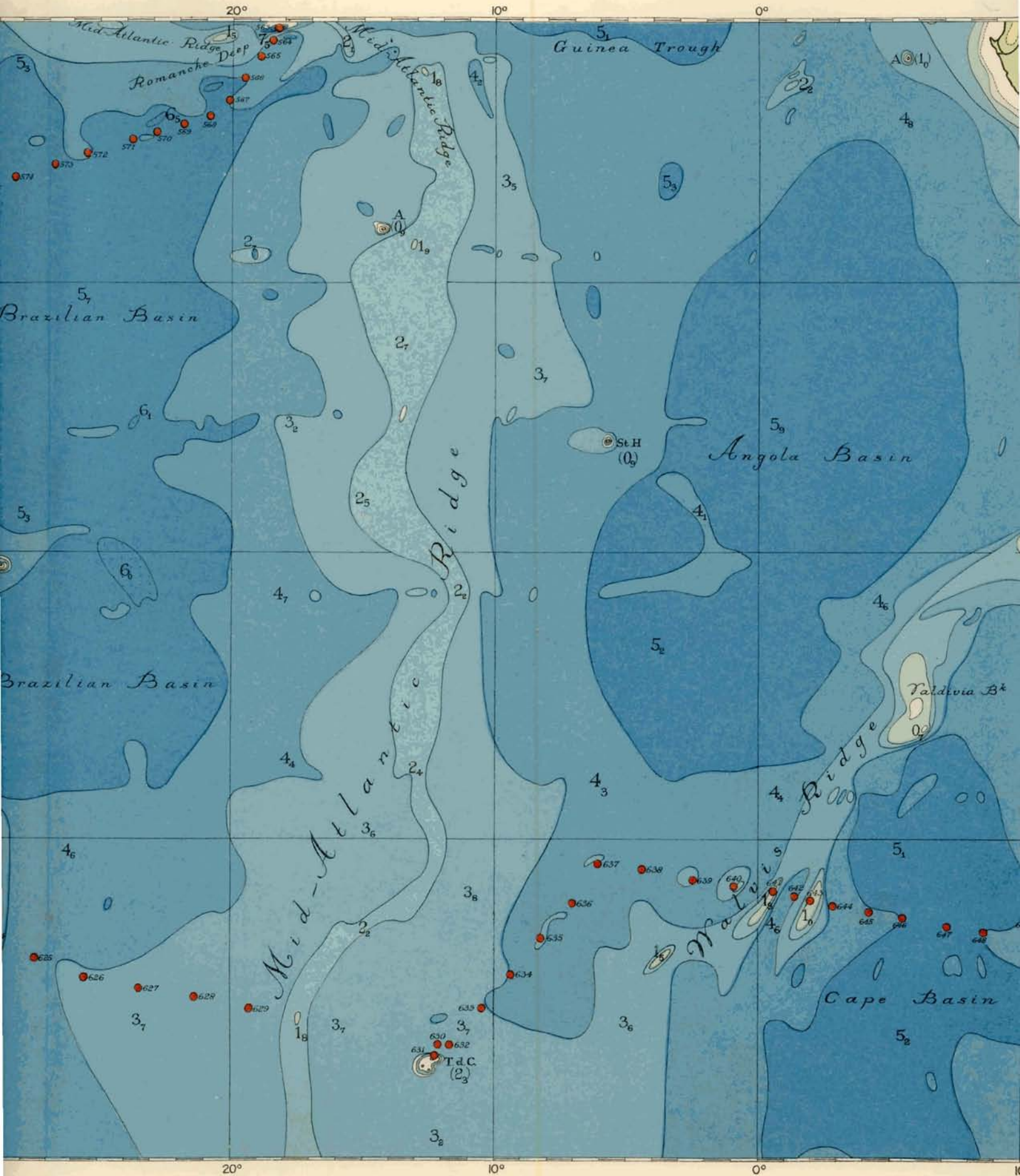


Scale 1:20.000.000 at the Equator.
 Mercator Projection.
 Depths and elevations in km.



BATHYMETRIC CHART OF THE SOUTH SHOWING DUTCH MARITIME

Nrs. 28-32 : H.M.S. „KII” 1923. Nrs. 150-425



SOUTHERN PARTS OF THE ATLANTIC AND INDIAN OCEANS MARITIME GRAVITY STATIONS UP TO 1940

Nrs. 150 - 425: H.M.S. „K XIII” 1926-1930. Nrs. 563 - 724: H.M.S. „K XVIII” 1935.



INDIAN OCEANS

1935.

Compiled and drawn according to
Bathymétrie des Océans
East of this meridian the
lines differs in some parts
shown in Sheet A'III (1-IX-1935)



Drawn according to the „Carte Générale
des Océans” as far as 90° E.
Meridian the representation of the contour
some parts rather considerably from that
at A'III (1-IX-1913) of the above-mentioned Chart.



80°

90°

100°

110°

